



DEVON HORSE SHOW & COUNTRY FAIR

FOR THE BENEFIT OF BRYN MAWR HOSPITAL

MAY 22 - JUNE 2, 2024



WHERE CHAMPIONS MEET

DEVON, PENNSYLVANIA

PREMIER HUNTERS • FEI CSI 4*

US EQUESTRIAN 6* JUMPERS

NATIONAL SHOW HUNTER HALL OF FAME SHOW



WELCOME TO THE 128TH ANNIVERSARY



of the Devon Horse Show & Country Fair! We are looking forward to your participation in this historic and important equestrian event. Our long standing traditions and celebration in 2024 will be one for the record books!

This year the show has many new additions and changes which you may not have seen in recent years. Kindly study the Prize List carefully. Additionally much time and effort with improvements to the barns, rings, and services have been made to assure your participation will be successful as well as enjoyable. I look forward to greeting you at what may be one of our finest shows ever.

As you make your plans, please check our website, www.devonhorseshow.net, for updates as the start of the show draws closer. Updates will occur as needed which include office and show rule guidelines and appropriate forms. The administration, show staff and the numerous volunteers will always be dedicated to your safety as an exhibitor.

We look forward to you joining us for the 128th Anniversary Show.

WAYNE W. GRAFTON

Chairman and CEO

Devon Horse Show & Country Fair

DHS Professional Associations and Affiliations

ROLEX	USEF	USHJA	WHIS	NAL
SJHJ	MACLAY	PHSA	ASBHA	AHHS
AMHA	ADHHA	PA SB ASSOC	ARHPA	
AM. ROADSTER H/P ASSOC.		AM SB ASSOC VA		



WE'VE GOT JUST THE ROOM YOU NEED.

The Courtyard by Marriott Philadelphia Devon has hosted guests of the Devon Horse Show for over 29 years. Step into our hotel and discover our newly renovated lobby featuring The Bistro- Eat. Drink. Connect. for healthy, flexible breakfast and dinner options. We also offer free Wi-Fi and plenty of spaces to relax. From the dynamic amenities to the superior service, we provide you with all the right options to help you enjoy your time on the road.

COURTYARD®
Marriott®

COURTYARD BY MARRIOTT®
Courtyard By Marriott Philadelphia Devon
762 W Lancaster Avenue
Wayne, PA 19087
610.687.6633
Marriott.com/PHLDV

Book now at Courtyard.com

Limited number of rooms are available for this promotion. Tax is additional. Offer cannot be combined with any other promotions. Blackout dates may apply. Advanced reservations required. Other restrictions apply. Rates are per room, per night and based on availability at the time of reservations.



EXHIBITOR HOSPITALITY

Enjoy the breathtaking views and outstanding hospitality while taking the action in the Dixon Oval and Wheeler Ring.

The facility is fully air conditioned with restroom facilities located on the first floor.



JUNIOR WEEKEND

Devon Club Tables
including complimentary
Buffet Breakfast, Lunch,
Snacks & Beverages

**High Top Table of 4
\$800/day**

**Table of 6
\$1,200/day**

ENTERTAINMENT

Perfect for entertaining
during the show!
Gourmet Fare and
Top Shelf Open Bar

25 - 150 people

**Prices Ranging from
\$100 - \$250/person**

CONTACT: (610) 964-0550 x219 ~ events@devonhorseshow.com



EXHIBITOR SEATING OPTIONS

VIP Daytime Hospitality

Daytime Hospitality in the Committee Stand
Thursday, May 23th through Saturday, June 1, 9am-4pm
Sunday, June 2th, 9am-2pm

Junior Weekend Private Box Seating

Available in limited quantities for Junior Weekend only.

Thursday, May 23th - Sunday, May 26th
6 seat boxes \$1,000 and 4 seat boxes \$800 for four days
(610) 688-2554 ~ tickets@devonhorseshow.com

Covered Grandstand Seating

With the exception of Thursday evening May 30th (Sapphire Grand Prix),
Section EF in the East 2 Grandstand and Section EG in the East 3 Grandstand
are reserved for Exhibitors FREE of charge
*You must be wearing a valid exhibitor wristband

Sapphire Grand Prix Seating

Exhibitors may purchase reserved grandstand seats for \$80 beginning, Monday,
April 1st. Purchase online at www.horseshow.net. Tickets SELL OUT quickly!



(610) 688-2554 ~ tickets@devonhorseshow.com



Learn. Compete. Belong.

JOIN OUR COMMUNITY AT [USHJA.ORG/MEMBERSHIP](https://www.ushja.org/membership)



ESI PHOTOGRAPHY, PHELPS MEDIA GROUP, TRICIA BOOKER, MCCOOL PHOTOGRAPHY, PHOTOS

Welcome Exhibitors!

JOIN US



TUE -MAY 28

HUNTERS WELCOME PARTY

MON -MAY 27

JUMPERS WELCOME PARTY

WED -MAY 29

SADDLEBRED WELCOME PARTY

Devon Exhibitors Lounge

4:00-6:00PM



September 12 - 15, 2024



SAVE THE DATE

**EQUESTRIAN JUMPING COMPETITION
CELEBRATING 11 YEARS!**

- * Live Entertainment
- * Special Events in the Picnic Grove
- * Classic Fair Food with an Autumn Twist
- * Great Shopping

We're everywhere you're going to be!

Signature Academics will be on the grounds
throughout **Devon Junior Weekend.**

From tutoring in all subjects to test proctoring
and independent study space, we've got your
academic needs covered at Devon.

Let us know how we can help!



For more information, call or text
Wendy Salomon • 908.200.8862

*www.signatureacademics.com
info@signatureacademics.com*

Signature Academics and **Signature One-to-One School**
are proud sponsors of the Devon Horse Show and Country Fair.

The Devon Horse Show reserves the right to limit the number of entries accepted for any division. US Equestrian GR914.

In classes where the riders are limited or restricted, the rider's name must be listed on the entry form. Entries will be qualified and accepted in only the height and age section entered and may not change for any reason.

For all qualifying sections, if any section does not achieve the desired number of entries, management reserves the right to increase the number of applicants accepted in any other section, subject to the limitations of the schedule.

The Devon Horse Show reserves the right to accept late entries and establish a waiting list for the following sections:

LIMITED ENTRIES - APPROXIMATE NUMBER TO BE ACCEPTED:

Small Pony Hunter _____	30	International Hunter Derby _____	no limit
Medium Pony Hunter _____	30	Green Conformation Hunter _____	20
Large Pony Hunter _____	30	High Performance Conf. Hunter _____	15
Small Junior Hunter 3'3" _____	25	AO Hunter 18-35 _____	26
Large Junior Hunter 3'3" _____	25	AO Hunter 36+ _____	26
Small Junior Hunter 3'6", 15 & Under _____	20	AO Hunter 3'3" 18-35 _____	25
Small Junior Hunter, 3'6" 16 & 17 _____	20	AO Hunter 3'3" 36+ _____	25
Large Junior Hunter, 3'6" 15 & Under _____	20	1.10/1.15m Junior Jumper _____	25
Large Junior Hunter, 3'6" 16 & 17 _____	20	1.40/1.45m Junior Jumper _____	30
Green Hunter 3'6" _____	20	1.40/1.45m Amateur Jumper _____	25
Green Hunter 3'9" _____	20	1.10/1.15m Amateur Jumper _____	25
High Performance Working Hunter _____	20	Open Jumper Rider _____	32

ALL EXHIBITORS: The Committee reserves the right to decline any entry of persons suspended or expelled from US Equestrian. Management reserves the right to decline any entry of an exhibitor or the participation of any agent, trainer, rider, driver or handler who has shown an objectionable attitude or behavior at a licensed competition towards its management, which management is able to substantiate, or previous unsportsmanlike behavior at a licensed competition which management is able to substantiate. Horses shown in classes in which they have not entered will be required to pay DOUBLE ENTRY FEE in those classes. The show office obtains and verifies each entry's points and money-won records directly with US Equestrian.

QUALIFYING HUNTERS: Hunter sections restricting entries based on winnings will use US Equestrian National Horse of the Year points or money won, as applicable, received at shows starting on or after April 3, 2023 through shows starting on or before April 1, 2024 as means of qualification using the best points earned or money won, per HJ126, at no more than 15 horse shows during this time period. Management will allow horses/ponies who were champions at the Devon Horse Show in 2023 to show in 2024 in their respective sections if eligible and entered by the entry deadline. For Green Hunter Sections (3'6", 3'9", Green Conformation): the qualifying period for these sections is December 1, 2023 thru and including April 1, 2024.

JUMPERS (other than FEI): 1.40/1.45m Junior and Amateur Jumper sections will use US Equestrian records of money won in their respective sections in classes with fences set at 1.40m or higher to accept horses based on the qualifying period of shows starting on or after April 3, 2023 through shows starting on or before April 1, 2024, using the best points earned at no more than 15 shows during this qualifying period. 1.10/1.15m Junior and Adult Jumper sections restricting entries based on winnings will use US Equestrian National Horse of the Year points received in their respective sections at shows starting on or after April 3, 2023 through shows starting on or before April 1, 2024 as means of qualification, using the best points earned at no more than 15 horse shows during this time period.

OPEN JUMPERS: Open Jumper riders will qualify based on their ranking on the Rolex/US Equestrian Show Jumping Ranking list as of April 1, 2024 and the FEI Longines World Ranking List #277. Athletes who wish to receive an invitation to compete, please complete the Intent to Compete form (<https://form.jotform.com/240234228197152>). Once an FEI invitation is issued, you will receive a link to complete competition entries through the Show Management System on line entry platform.

OTHER HUNTERS, LEADLINE, SIDE SADDLE, HUNT TEAMS, FAMILY CLASS, & EQUITATION: Exhibitors entering these classes and sections must include entry, office, stall, drug and showing fee, and ambulance fee with entry blanks. See each section for entry deadlines and fee details.

DEVON HORSE SHOW AND COUNTRY FAIR, INC. RULES & REGULATIONS

Every class offered herein which is covered by the rules and specifications of the current US Equestrian Rulebook will be conducted and judged in accordance therewith.

Health Requirements - please see Equine Vaccination Rule GR844

CLOSING DATE OF ENTRIES:

Monday, April 1, 2024 at 5pm Eastern:

Entries close for Hunters, Equitation, Local Hunters, and all Jumpers.

Monday, April 22, 2024 at 5pm Eastern:

Entries close for Coaching and Hunter Breeding/Pony Hunter Breeding.

Monday, April 29, 2024 at 5pm Eastern:

Entries close for Saddlebred, Hackney, Harness, Roadster, Driving, and Pleasure Drive.

SUBMISSION OF ENTRIES:

ONLINE ENTRIES ONLY THROUGH SHOWMANAGEMENTSYSTEM.COM!

Payments are to be in US Funds only, and MUST be made by credit card. All additional charges and fees made after the initial entry will be charged to the original credit card used unless another form of payment is designated at check in. For credit card payment, please use the official credit card form available in this prize list, or at www.devonhorseshow.net. Non-negotiable payments (either check or credit card) will disqualify the entry, and the exhibitor will be charged a \$50 collection fee. Exhibitors with outstanding debts to Devon Horse Show will not be allowed to compete. Coggins certificates, health certificates and/or measurement cards must accompany horses/ponies on arrival. Incomplete entries are subject to a \$50 fee. Entry blanks must include all relevant US Equestrian/USHJA information and signatures required.

Exhibitors must provide a COMPLETE and VALID (matches name of prize recipient) Social Security number or Federal Tax ID number on each entry blank in order to receive prize money payouts.

ENTRIES MUST BE SUBMITTED ONLINE:

The Devon Horse Show uses the Show Management SystemTM electronic entries platform to process entries and communicate with hopeful competitors about their acceptance status. All competitors and trainers must submit entries through this service. All entries will be assessed a \$5.75 entry processing fee, payable to Show Management SystemTM, to be collected at time of submission. To submit entries or learn more, please visit <https://entries.showmanagementsystem.com>. **Faxed/emailed entries will NOT be accepted. ALL ENTRIES WILL BE CHARGED \$100.00 OFFICE FEE AND A \$50.00 AMBULANCE FEE.**

ADDITIONAL ENTRY PROCEDURES FOR HUNTER AND JUMPER QUALIFYING DIVISIONS:

Entries must be submitted online via <https://www.ShowManagementSystem.com>. Entries submitted after midnight on April 1, 2024 will not be accepted. Entries must be accompanied by a non-refundable, non-transferable \$105.75 fee (\$100 application/\$5.75 processing) via credit card. Do not include any entry fees, stall fees or show fees with entry. All fees will be invoiced with an acceptance email to qualified entries. Acceptance notification will be sent by the first week of May to the online user who created the entry. Payment in full as billed on the acceptance invoice must be paid in full by the specified date of return at www.ShowManagementSystem.com to consider the entry complete. If an acceptance is to be declined, it must be declared as such in writing to the Horse Show office. Entries not paid in full by the specified date will not be considered entered and will not be permitted to compete.

WEBSITE: www.devonhorseshow.net

EMAIL: entries@devonhorseshow.com

PHONE FOR ENTRY INFORMATION & ASSISTANCE: (610) 964 - 2723

EQUITATION EXHIBITORS: For equitation only - those who have properly entered and have been accepted to show in one or more of the equitation classes offered may, if eligible, post-enter additional equitation classes by noon on Wednesday, May 22nd, 2024. Exhibitors entering any equitation class must include entry fee, stall fees, showing fees, and \$5.75 processing fee with initial entry.

SADDLEBRED, HACKNEY and HARNESS EXHIBITORS: All horses showing in the Saddlebred division must represent current breed papers. Post-entries for individual classes will only be accepted for horses already entered. Any class changes (i.e. scratches/adds) must be completed in the Horse Show office by 12:00 noon for the afternoon classes and/or by 5:00pm for evening classes on the day of the competition.

- **All exhibitors must provide a credit card or open check to allow for class changes.**
- **Exhibitors MUST provide SOCIAL SECURITY NUMBER for PRIZE MONEY.**
- **It is the responsibility of the exhibitor to ensure that the Show office has the CORRECT and COMPLETE Social Security number.**

STARTING ORDER: Starting orders will be established for every class over fences. A systematic rotation will be employed within each section. The starting orders for the Junior, and Amateur Jumper Classics and the Open Jumper Stake will be drawn first and the remaining classes in these sections will be rotated off of those orders. The starting order for the Sapphire Grand Prix and the Idle Dice Jumper Stake will have a separate draw.

SCHOOLING: Daily schooling schedules will be posted.

NO LUNGING OF HORSES WILL BE PERMITTED ANYWHERE ON THE SHOWGROUNDS WHILE THE SHOW IS IN SESSION. NO EXCEPTIONS.

RING INFORMATION: Dixon Oval - 150' X 325'; Wheeler Ring - 148' X 295'; all show rings and schooling areas are surfaced with DJL Equestrian Services Footing Elite.

FEES: Payment of all fees must be made in US Funds. A penalty of \$50.00 will be charged for all non-negotiable funds. Management reserves the right to prohibit from competition and return the entry of any owner, rider, driver or trainer whose processing or entry fee payment has been returned as non-negotiable on one or more occasions. Devon Horse Show reserves the right to require guaranteed funds from exhibitors. All financial matters regarding the 2024 Devon Horse Show will be closed by June 24, 2024, NSF collection excepted. **When you provide a check as payment, you authorize Devon Horse Show either to use information from your check to make a one-time electronic fund transfer from your account or to process the payment as a check transaction.**

SCRATCHES: Stabling, nomination and application fees will not be refunded under any circumstances. If a horse has shown in any class, it is not eligible for any refund. Horses entered may be scratched without a veterinarian's certificate by notifying the Horse Show office in writing by noon EST on Monday April 29th and entry fees will be refunded less a \$200 processing fee. Should a horse be deemed unable to compete between noon EST on Monday April 29th and noon EST Monday May 6th, a scratch submitted with a veterinarian's certificate will be eligible for 50% entry fee refund less a \$200 processing fee. No other scratches under any other circumstances will be issued a refund. Unless written notification is received by noon EST May 6th, no portion of entries or fees will be refunded. Refunds will be mailed within 30 days after completion of the show. A scratched entry is no longer eligible to receive exhibitor parking passes or exhibitor wristbands.

SUBSTITUTIONS: No substitution of horses may be made after the announced closing of entries, except Saddlebred/Hackney entries and equitation classes. A completed entry blank and all necessary paperwork must be submitted to apply for said substitution. No horse may be withdrawn from competition without permission from the Show Committee. Exhibitors are responsible for entry fees of all horses entered by them or by their agents.

SETTLING OF ACCOUNTS: All accounts must be settled in full by Monday, June 17, 2024. No adjustments, reissuing of checks or rebilling will be permitted after this date!

TIME SCHEDULE: The time schedule and order of events herein is tentative. The schedule booklet (which will be available at the Horse Show office) will contain the official starting times, changes in scheduling, and revisions. Exhibitors are responsible for having entries at the ring 30 minutes before class time. No class will be delayed more than three minutes. Exhibitors must request the Starter to adjust for conflicts.

TROPHIES: The Devon Horse Show will retain all trophies and is responsible for the engraving of trophies.

EXHIBITOR PASSES: Passes for exhibitors and their guests will be assigned and may be obtained from the Horse Show office.

PARKING: Parking is extremely limited and will be on a first come first served basis! No cars will be allowed on the grounds at any time without the proper passes. Vans or trailers will not be allowed on the grounds while the show is in session during Junior Weekend (5/22-5/25).

DOGS: Dogs will not be permitted on the premises unless restrained by a leash. Stable dogs must be confined at all times. Any owner of a dog found loose on the show grounds will be fined \$100 and will be responsible for the entry fees of the horse (s) whose performance may have been disrupted!

CAMPERS: No campers or RVs allowed on the grounds. Parking for RVs and campers is not available in any of the Devon parking lots.

HUNTER CHAMPIONSHIPS: Unless otherwise noted, the Champion and Reserve Champion titles in each section will be awarded to two of the four horses/ponies which have earned the most points in all classes over fences in that section. In addition to these points, only these four will receive full points for ribbons won in one Under Saddle class and half points won in a Model class. Ties broken according to US Equestrian HU156.

ADDITIONAL RULES: Numbers will be provided by the Horse Show. GR801.11 will not be enforced. In all hunter and equitation classes, management reserves the right to limit the courtesy circle with the use of a dotted line. Exhibitors are notified that any act of discourtesy or disobedience to the judges or officials on the part of any owner, rider, driver, trainer or groom will disqualify the horse and require the owner to forfeit all entry and other fees. The Committee reserves the right to prohibit any person from attending or showing a horse and to remove any horse or groom from the show without being liable for compensation. The Committee will not be responsible for any accident which may occur to any rider, driver, trainer, groom or attendant, animal, carriage or equipment at the show. Should any questions arise that are not provided for in the rules, the same will be referred to the Show Committee whose decision shall be final.

Recognized Hunter Sections- jogging rule. HU118.3, Option A. Horses/Ponies are required to trot a circle on a loose rein at the end of each over fences performance. Horses/Ponies may be asked to the other ring and trot another circle at the judges discretion

BIOHAZARDOUS MEDICAL WASTE: Containers for the disposal of needles, syringes, and other medical waste will be provided in all stabling areas. All exhibitors and their agents are responsible for the proper disposal of medical waste. This also applies to needles and syringes, which must be disposed of in the containers provided.

PLEASE NOTE: Upholding the welfare of the horses being exhibited at the Devon Horse Show is of primary concern to the Devon Horse Show Committee. We require that all horses be treated with the kindness, respect and compassion they deserve and should never be subjected to mistreatment. Exhibitors, owners, trainers, grooms, or their agents must use reasonable care in the handling and treatment of the horse owned by them or placed in their care for competition or any other purpose. We will provide continuous well-being of the horse by vigorously enforcing the rules of US Equestrian as they pertain to the welfare of the horse. Exhibitors are cautioned that Article 830 and HU100 will be narrowly interpreted. Violators will be automatically penalized by the elimination of the horse involved from the class in which it is participating and the next succeeding class in which it is entered. All such violations will be recorded in the US Equestrian Steward's Report and be reviewed by the Hearing Committee for such action as may be deemed appropriate.

WATER HOSES: All water hoses **MUST** have a cutoff valve or an on/off nozzle on the outflow end and no hose is to be left unattended or they will be confiscated. Water conservation is of the utmost importance.

PRIZE MONEY

THE FINANCE OFFICE WILL BE RESPONSIBLE FOR ISSUING ALL PRIZE MONEY.

ALL ENTRIES IN PRIZE MONEY CLASSES MUST PROVIDE A VALID AND COMPLETE SOCIAL SECURITY NUMBER OR FEDERAL TAX ID AS WELL AS CURRENT MAILING ADDRESS.

- **2023 Prize Money offered \$261,600 and Prize Money awarded \$261,425.**
- **2024 Prize Money offered \$286,600 and Prize Money guaranteed \$225,000.**
- **All FEI related prize money checks will be mailed within 10 days after the completion of the show, and all other prize money checks will be mailed within 30 days after the completion of the show to the holder of the W-9 attached to the entry.**
- **A W-9 is required for each entry. Prize money will be paid based on the following entry information hierarchy:**
 - a. **Holder of the W-9**
 - b. **Alternate Payee**
 - c. **Owner of Record**
- **The exhibitor is responsible for providing valid tax information (complete Social Security number or Federal Tax ID) and a valid mailing address to the show to the Horse Show office prior to the end of the show. No prize money check, regardless of the amount, will be issued unless ALL this information is supplied.**
- **Exhibitors that are not from the United States must provide an ITIN (International Taxpayer ID) or be subject to a 30% IRS withholding fee.**
- **Prize money checks will not be reissued in the event they are returned because of incorrect information.**
- **Prize money checks must be cashed within 180 days from the date of issuance.**



DEVON ARENA EVENTING

Sunday Night, May 26, 2024

Entry Deadline is Monday, May 13, 2024, at 5:00pm Eastern.

ALL ENTRIES MUST BE SUBMITTED ONLINE AT

<https://entries.showmanagementsystem.com>

Confirmations will be emailed to the competitor.

Schedule: 4:00pm - Course build
6:15pm - Course walk and horse acclimation
7:00pm - Start of competition

\$50,000 purse distributed over 12 placings.

Fence height- Eventing obstacles/1.15m, show jumping obstacles/1.20m.

1st - \$12,500; 2nd - \$10,000; 3rd - \$7,500; 4th - \$5,000; 5th - \$3,500; 6th - \$2,750;
7th - \$2,000; 8th - \$1,500; 9th - \$1,500; 10th - \$1,250; 11th - \$1,250; 12th - \$1,250

ENTRY FEE: \$250

Classified as Intermediate Level/Arena Eventing- listed in USEF Eventing Rules, Annex 3. Riders must consult USEF Eventing Rules, Annex 3 for the minimum eligibility requirements to compete.

COURSE DESIGNER

Captain Mark Phillips GBR

TD

Mr. Rick Caldwell Branford, CT

Utilizing both competition arenas (Dixon Oval- 150' x 325', Wheeler Ring - 148' x 295') for the first round, conducted under the optimum format with the top 12 (or all penalty free rounds) returning for one jump-off against the clock in the Dixon Oval.

Length of first round course - 1,000m. Speed calculated at 450m/m. No stabling is available. There will be a designated parking lot for shipping in. Instructions will be included in your acceptance notification.

Riders may enter up to 2 horses but will be limited to 1 horse if entries warrant.
Post entries will be accepted at management's discretion.

<https://entries.showmanagementsystem.com>

ADMINISTRATIVE/BUSINESS OFFICES

Devon Horse Show, PO Box 865, Devon, PA 19333

Phone: (610) 964-0550 • info@devonhorseshow.com

STREET ADDRESS & PARCEL DELIVERIES

Devon Horse Show, 23 Dorset Rd, Devon, PA 19333

Corner of Valley Forge & Berkley Roads

STABLING OFFICE

Starting Tuesday, May 21

Tom Blankenship (610) 688-2665

FEED & BEDDING OFFICE

Starting Tuesday, May 21

Patrick Duncan • Wellington, FL
(610) 964-8407

HORSE SHOW ENTRIES QUESTIONS

Online Entries: <https://entries.showmanagementsystem.com>

Exhibitor Info: <https://www.devonhorseshow.net/exhibitors/exhibitors-info/>

Phone: (610) 964-2723

entries@devonhorseshow.com

WEBSITE

www.devonhorseshow.net

TICKET OFFICE

Starting Monday, April 1st

Hours: Monday - Friday, 10 AM - 5 PM

(610) 688-2554

tickets@devonhorseshow.com

TROPHY COMMITTEE: (610) 964-0550

COUNTRY FAIR OFFICE

PO Box 882, Devon PA 19333

(610) 525-2533

LICENSEE: Devon Horse Show & Country Fair

EXCLUSIVE PHOTOGRAPHERS FOR THE 2024 DEVON HORSE SHOW

Kind Media LLC Doug Schiflet Brenda Carpenter Photography

Any other commercial photography, or advertisement thereof, taken of subjects within the confines of the show rings without prior written consent from Show Management is expressly forbidden.

Violation of this rule will be grounds for removal from the show premises.



NEAREST HOSPITAL/TRAUMA CENTER

PAOLI MEMORIAL HOSPITAL

(4.6 miles West on Lancaster Ave/Route 30)

255 West Lancaster Ave, Paoli, PA 19301

(484) 565-1000

HOW TO GET TO DEVON

Street Address: 23 Dorset Road, Devon, PA 19333

By automobile or van:

From Pennsylvania Turnpike heading east or west or Northeast Extension heading south: Take I-476S to Exit 13, Route 30W to Devon Show Grounds on left.

From Delaware, Maryland and points south: I-95N to I-476N to Route 30W to Devon Show Grounds on left.

By train - Paoli/Thorndale Regional Rail Line:

From 30th Street Station in Philadelphia or Suburban Station in downtown Philadelphia at 16th and John F. Kennedy Boulevard: the Paoli Thorndale Regional Rail trains run about every 35 minutes to Devon and return. Nationwide rail connections from 30th Street Station. The show grounds are an easy walk over, just one block away.

By air:

From Philadelphia International Airport visitors can take the SEPTA Airport Train to 30th Street Railroad Station, and take Paoli/Thorndale Regional Rail Line train to Devon Station (see above).

2024 USEF ENTRY AGREEMENT

By entering a Federation-licensed Competition and signing this entry blank as the Owner, Lessee, Trainer, Manager, Agent, Coach, Driver, Rider, Handler, Vaultor or Longeur and on behalf of myself and my principals, representatives, employees and agents, I agree that I am subject to the Bylaws and Rules of the United States Equestrian Federation, Inc. (the "Federation") and the local rules of the competition.

I agree to be bound by the Bylaws and Rules of the Federation and of the competition. I will accept as final the decision of the Hearing Committee on any question arising under the Rules, and agree to release and hold harmless the competition, the Federation, their officials, directors and employees for any action taken under the Rules.

I represent that I am eligible to enter and/or participate under the Rules, and every horse I am entering is eligible as entered.

I also agree that as a condition of and in consideration of acceptance of entry, the Federation and/or the Competition may use or assign photographs, videos, audios, cable-casts, broadcasts, internet, film, new media or other likenesses of me and my horse taken during the course of the competition for the promotion, coverage or benefit of the competition, sport, or the Federation. Those likenesses shall not be used to advertise a product and they may not be used in such a way as to jeopardize amateur status. I hereby expressly and irrevocably waive and release any rights in connection with such use, including any claim to compensation, invasion of privacy, right of publicity, or to misappropriation.

If not currently a USEF Active Competing member or Subscriber and competing only in classes that are exempt from membership requirements, I acknowledge and agree that I will be enrolled at no cost as a USEF Fan and my USEF Fan Account will continue to annually automatically renew unless and until USEF determines in its sole discretion to terminate my Fan account. Additionally, I acknowledge that the benefits of a USEF Fan are subject to change without notice. e construction and application of Federation rules are governed by the laws of the State of New York, and any action instituted against the Federation must be filed in New York State. See GR908.4.



DEVON HORSE SHOW & COUNTRY FAIR
US Equestrian Heritage Competition
Since 2010

STABLING INFORMATION

STABLING OFFICE

Starting Tuesday, May 21, 2024

(610) 688-2665

ADVANCE FEED & BEDDING

Patrick Duncan • Wellington, FL

Email: p77duncan@gmail.com

IMPORANT: Place you order ASAP for delivery before arrival!

ALL Feed & Bedding Orders can entered at this URL:

<https://stallinfo.net/devon-horse-show>

No vans, trailers or other vehicles will be permitted to enter the showgrounds for any purpose while the show is in progress during Junior Weekend 5/22-5/25.

HEALTH REQUIREMENTS:

- The State of Pennsylvania requires that all horses must be in possession of a current negative Coggins certificate (EIA) dated within the 1 year of start of show. The Devon Horse Show and Country Fair will not accept or process any animal whose negative Coggins certificate, or copy of thereof does not accompany the horse. The show may retain a copy for its records. US Equestrian Equine Vaccination Rule GR844 requires vaccination within 6 months prior to start of show. Please fill out a MANDATORY Biosecurity Form on page 28 before arrival at the show.
- Stalls are all permanent stabling. Stalls are approximately 9'6" X 9'6" and 10' X 10' with doors.
- Due to limited stabling facilities, the Committee may find it necessary to decline assigning stalls to animals entered in only one performance class, or where the entry is being shown in hand or breeding classes only. No stall can be allotted for a horse not entered in the show. No stalls can be allotted to Leadline, Parent & Child, Family Class or Hunt Team horses.
- Side Saddle, Hunter Breeding and Pleasure Drive will be allotted OVERNIGHT stalls only. Local Hunters will not be allotted overnight stalls (see Local Weekend stabling information below).
- Due to limited parking, all exhibitors planning on shipping in and out daily should be prepared to park a considerable distance from the grounds. We encourage these exhibitors to order overnight stalls.

STALL DATES AND FEES (No Stall Splits):

Junior Weekend Stall - \$300.00 - 8:00am May 21 through midnight May 25

- Must be vacated by midnight Saturday, May 25th
- A schooling schedule will be posted for Junior Weekend

Sr Week Stall Hunter/Jumper - \$300.00 - 8:00am May 26 through 5:00pm May 29

- To include Pro Division hunter/jumper - stalls may be limited at the discretion of management.
- Horses entered in Green, Conformation, High Performance Hunter must vacate their stalls by 5:00pm, Wednesday, May 29st. (Exception Derby Horses)

Sr Week Saddlebred/Hackney/Fine Harness - \$300.00 - 8:00am May 28 thru 5:00pm June 1

- To include Saddlebred/Hackney/Fine Harness etc. - stalls may be limited at the discretion of management.

Amateur Htr/1.40/1.45m Amateur Jumper: \$300.00 - 5:00pm May 29 through 5:00pm June 1

1.10/1.15m Amateur Jumper Stall: \$300.00 - 5:00pm May 25 through 8:00am May 28

1.10/1.15m Junior Jumper Stall: \$300.00 - 5:00pm May 21 through 8:00am May 27

Local Weekend Stall: \$300.00 - 5:00pm May 30 through 8:00am June 2

Pony Breeding Stall: \$150.00 - 5:00pm May 21 through 8:00am May 22

Horse Breeding Stall: \$150.00 - 5:00pm June 1 through 8:00am June 2

Side Saddle Stall: \$150 - May 28

Driving Stall - \$300.00 - 8:00am May 25 through 5:00pm June 1

- Availability for carriage driving competitors is based upon the number of Coaching entries requesting stalls

2024 SHOW OFFICIALS

The Committee reserves the right to vary or add to these names.

- JUDGES -

HUNTERS, HUNTER SEAT EQUITATION, INTERNATIONAL DERBY

Shane George Magnolia, TX
Timmy Kees Norwalk, CT

HUNTER BREEDING

Timmy Kees Norwalk, CT
Winn Alden Waterford, VA

PONY BREEDING

Pat Dodson Clemmons, NC
Meg Rhoades Keswick, VA

PONY HUNTERS, JR HUNTERS, EQUITATION, AMATEUR-OWNER HUNTERS, LOCAL HUNTERS

Mr. William Sparks New Orleans, LA
Mr. Bob Crandal Wellington, FL

JUMPERS

Mr. Ralph Alfano, President of Ground Jury Wellington, FL
Ms. Leslie Brown Siesta Key, FL
Ms. Flora Baptiston Brazil
Andrea Martina Herschel Voelker, FEI Foreign Judge Guatemala

SADDLEBRED, ROADSTER, FINE HARNESS, HACKNEY HORSES & PONIES, HARNESS PONIES

Mr. Joshua Greer East Bernstadt, KY
Mr. Kent Moeller (Breeds Coordinator) Versailles, KY

COACHING

Mr. Terry Picket Frankfort, MI
Ms. Jessica Axelsson (Ponies) Cape May, NJ

CARRIAGE PLEASURE DRIVE

Mr. Terry Picket Frankfort, MI
Ms. Jessica Axelsson (Ponies) Cape May, NJ

COURSE DESIGNERS

Mr. Alan Lohman (Hunters & Equitation) Poolesville, MD
Alan Wade (Jumpers/FEI) Palmetto, FL
Captain Mark Phillips (Arena Eventing) London, England

STEWARDS

Ms. Mary Choate Heath Springs, SC
Ms. Faith McKay Alicea Barto, PA
Mr. Ken Okken Vernon, NJ
Mr. Bruce Burr Weston, CT

SCHOOLING SUPERVISORS/FEI STEWARDS

Ms. Joni Moloney.....	New Hope, PA
Ms. Julie Karpan.....	Micanopy, FL
Mr. Peter Lane.....	Wellington, FL
Ms. Colleen Reed.....	Batavia, OH
Mr. Dan Reed.....	Batavia, OH
Ms. Donna Rocchetti.....	Falls, PA

ANNOUNCERS

Mr. Oliver Kennedy.....	Brookville, MD
Mr. Davin Malmqvist.....	Littleton, CO
Mr. Kenn Marash.....	Blue Bell, PA
Mr. David Tuffy Owens.....	Lenhartsville, PA
Mr. Jason Porter.....	Tryon, NC

STARTERS

Ms. Sarah Jackson.....	Spring Hill, TN
Mr. Jeremy Raleigh.....	Mundelein, IL
Mr. Russell Stewart.....	Deansboro, NY

RINGMASTERS

Mr. Alan Keeley.....	North Salem, NY
Kent Moeller.....	Versailles, KY
Steve Rector.....	Kodak, TN

ORGANIST

Ms. Amy Paradise Braden.....	New Waterford, OH
------------------------------	-------------------

FARRIERS

Mr. Scott Mohney.....	Harrisburg, PA
Mr. Jacob Snyder.....	Bennington, VT

VETERINARIANS

PENN VETS.....	Philadelphia, PA
----------------	------------------

FEI VETERINARIANS

Dr. Rick Mitchell (Delegate).....	Wellington, FL
Dr. Kate Stephenson (Treating).....	Ocala, FL

PHOTOGRAPHERS

Kind Media LLC (Hunters & Jumpers).....	Wellington, FL
(Pleasure Drive, Misc. Driving & Coaching (Mon.-Tue.))	
www.kindmediallc.com	(215) 280-8388
Doug Shiflet (Saddlebred, Hackney& Coaching (Wed.-Fri.)).....	Asheboro, NC
www.dougshiflet.com	(336) 629-6545

JUMPS

Stephens Equestrian Designs.....	Palmetto, FL
----------------------------------	--------------

COURSE DECORATOR

Ms. Flora Baptiston.....	Brazil
--------------------------	--------

STAFF

Mr. Patrick Boyle, Manager	Hampshire, IL
Mr. Phil De Vita, Manager	Apopka, FL
Mr. Graham McCleary, Grounds Manager.....	Malvern, PA
Mr. Chris Chalmers, Grounds	West Chester, PA
Mr. John Schrems, Grounds	Wayne, PA
Mr. Tom Blankenship, Stable Manager.....	Westfield, IN
Mr. Patrick Duncan, Feed and Bedding Manager	Wellington, FL
Mr. David Lauinger, Footing Specialist	Culpepper, VA
Mr. Bradley Bowns, Awards Coordinator/Presenter	Los Angeles, CA
Ms. Deborah Stone, Awards Presenter	Guthrie, OK
Ms. Cindy Bozan, Show Secretary.....	Lexington, KY
Mrs. Cheryle Francis, Assistant Show Secretary	Centreville, MD
Ms. Carol Voss, Assistant Show Secretary.....	Aiken, SC
Ms. Caroline Smith, Assistant Show Secretary.....	Welcome, NC
Mr. Ralph Stephens, Sound.....	Yorktown, VA
Mr. Jon Kassel, Computer Services	Barrington, IL

TENTATIVE TIME SCHEDULE

Wednesday, May 22, 2024

Junior Weekend

DIXON OVAL - 8:00 AM

23	Small Jr. Hunter 3'3"
24	Small Jr. Hunter 3'3" Handy
28	Large Jr. Hunter 3'3"
29	Large Jr. Hunter 3'3" Handy
22	Small Jr. Hunter 3'3" U/S
27	Large Jr. Hunter 3'3" U/S
	Open Schooling 2:30 - 7:00pm

WHEELER RING - 8:00 AM

301	Hunter Pony Foals
302	Hunter Pony Yearling Colts/Geldings
303	Hunter Pony Yearlings Fillies
304	Hunter Pony 2 Yr. Olds Colts/Geldings
305	Hunter Pony 2 Yr. Olds Fillies
306	Hunter Pony 3 Yr. Olds Stallions/Geldings
307	Hunter Pony 3 Yr. Olds Mares
308	Hunter Pony Produce of Dam
309	Hunter Pony Get of Sire
310	Hunter Pony Ch., Colts/Stallions/Geldings
311	Hunter Pony Ch., Filly or Mare
312	Best Young Pony
313	PHBHA Trophy
314	Leading Pony Breeder Handler Award
315	Young Pony Hunter U/S
	-Drag and water the ring
	Open Schooling 2:00 - 7pm

TENTATIVE TIME SCHEDULE

Thursday, May 23, 2024

Junior Weekend

DIXON OVAL - 8:00 AM

83	WIHS Equitation Classic - Jumper Phase
84	US Equestrian Talent Search 3*
201	1.40m Jr. Jumper - Table II, sec. 1

WHEELER RING - 7:30 AM

25	Small Jr. Hunter 3'3" Stake
26	Small Jr. Hunter 3'3" Champion/Reserve
30	Large Jr. Hunter 3'3" Stake
31	Large Jr. Hunter 3'3" Champion/Reserve
32	Overall Jr. Hunter 3'3" Grand Champion
81	Dover Saddlery US Equestrian Medal

TENTATIVE TIME SCHEDULE

Friday, May 24, 2024

Junior Weekend

DIXON OVAL - 7:30 AM

- 82 ASPCA Maclay
- 87 Hannah Serfass Best Overall Perf. Trophy
- 85 R.W. "Ronnie" Mutch Equitation Ch.
- 86 William Cooney Junior Equitation Award
- 42 Small Jr. Hunter, 16 & 17
- 36 Small Jr. Hunter 3'6", 15 & under
- 62 Large Jr. Hunter, 16 & 17
- 52 Large Jr. Hunter, 15 & under
- 51 Large Jr. Hunter U/S, 15 & under
- 61 Large Jr. Hunter U/S, 16 & 17
- 35 Small Jr. Hunter 3'6", 15 & under U/S
- 41 Small Jr. Hunter U/S, 16 & 17

WHEELER RING - 8:00 AM

- 2 Small Pony Hunter - Conformation
- 3 Small Pony Hunter
- 8 Medium Pony Hunter - Conformation
- 9 Medium Pony Hunter
- 14 Large Pony Hunter - Conformation
- 15 Large Pony Hunter
- 1 Small Pony Hunter Under Saddle
- 7 Medium Pony Hunter Under Saddle
- 13 Large Pony Hunter Under Saddle

DIXON OVAL - 7:30 PM

- 202 1.40m Jr. Jumpers - Table II, 2(a)

TENTATIVE TIME SCHEDULE

Saturday, May 25, 2024

Junior Weekend

DIXON OVAL - 7:30 AM

- 43 Small Jr. Hunter Handy, 16 & 17
- 37 Small Jr. Hunter 3'6" Handy, 15 & under
- 63 Large Jr. Hunter Handy, 16 & 17
- 53 Large Jr. Hunter Handy, 15 & under
- 44 Small Jr. Hunter Stake, 16 & 17
- 38 Small Jr. Hunter 3'6" Stake, 15 & under

--- not before 1:00 PM

- 71 Lead Line, 3 years & under
- 72 Lead Line, 4 & 5 years
- 64 Large Jr. Hunter Stake, 16 & 17
- 54 Large Jr. Hunter Stake, 15 & under
- 45 Small Jr. Hunter Ch., 16 & 17
- 39 Small Jr. Hunter 3'6" Ch., 15 & under
- 65 Large Jr. Hunter Ch., 16 & 17
- 55 Large Jr. Hunter Ch., 15 & under
- 66 Overall Small Jr. Hunter Champion
- 67 Overall Large Jr. Hunter Champion
- 68 Devon Grand Jr. Hunter Champion
- 69 Angelo Award
- 78 Best Child Rider on a Horse Award
- 221 1.10m Junior Jumper - Table II, 2(b)

WHEELER RING - 8:00 AM

- 4 Small Pony Hunter Handy
- 5 Small Pony Hunter Stake
- 6 Small Pony Hunter Ch.
- 10 Medium Pony Hunter Handy
- 11 Medium Pony Hunter Stake
- 12 Medium Pony Hunter Ch.
- 16 Large Pony Hunter Handy
- 17 Large Pony Hunter Stake
- 18 Large Pony Hunter Ch.
- 19 Devon Grand Pony Hunter Ch.
- 21 Best Child Rider on a Pony Award
- 20 Pony Sportsmanship Award
- 73 Pony Hunt Teams

DIXON OVAL - 7:00 PM

- 203 1.45m Jr. Jumper SJHOF Classic
- Table II, 2(a)
- 204 1.40/1.45m Jr. Jumper Ch.
- 205 Leading Jr. Jumper Rider Award
- 206 Jr. Jumper Style of Riding Award
- Exhibition: Parade of Radnor Hunt Hounds*
- 74 Horse Hunt Teams
- 76 Parent & Child Class
- 75 Family Class

TENTATIVE TIME SCHEDULE

Sunday, May 26, 2024

Junior Weekend

DIXON OVAL - 7:00 AM - Noon

Hunters Schooling (Professionals)

WHEELER RING - 8:00 AM

222 1.10m Junior Jumper - Table II.1

232 1.10m Amateur Jumper - Table II.1

DIXON OVAL - 12:00 PM

Exhibition - Thorncroft

Carriage Pleasure Drive - final judging

Horse Division

501 Single Harness, Two Wheel Vehicles

502 Single Harness, Four Wheel Vehicles

503 Double Harness - Pairs - Tandems

504 Unicorns and Four-in-Hands

Pony Division

505 Single Harness, Two Wheel Vehicles

506 Single Harness, Four Wheel Vehicles

507 Double Harness - Pairs - Tandems

509 Light Commercial & Farmer's Division

510 Championship Drive Off

511 Pleasure Drive Amateur Whip Award

223 NAL 1.15m Junior Jumper Classic
- Table II, 2(a)

224 1.10/1.15m Junior Jumper Championship
Exhibition - Shetland Pony Steeplechase

DIXON OVAL - 5:00 PM

Eventing course build

DIXON OVAL - 6:15 PM

Course walk and horse acclimation

DIXON OVAL - 7:00 PM

Devon Arena Eventing

TENTATIVE TIME SCHEDULE

Monday, May 27, 2024

Memorial Day

DIXON OVAL - 8:00 AM

101 Model Green Conformation Hunter

122 Green Hunter 3'6"

123 Green Hunter 3'6"

103 Green Conformation Hunter

104 Green Conformation Hunter

132 Green Hunter 3'9"

133 Green Hunter 3'9"

462 Pair Horses - Pleasure Turnout

463 Pair Horses Scurry Driving

464 Pair Horses Ch.

Exhibition - Shetland Pony Steeplechase

WHEELER RING - 10:00 AM

231 Adult Jumper - Table II, 2(b)

following Class 133

121 Green Hunter 3'6" U/S

102 Green Conformation U/S

131 Green Hunter 3'9" U/S

FEI Horse Inspection -held in schooling area

DIXON OVAL - 7:00 PM

Set Course - 4:30pm

Course Walk - 5:30pm

Tribute to Heros Opening Ceremony - 6:00 pm

233 NAL 1.15 Amateur Jumper Classic
- Table II, 2(a)

234 1.10/1.15m Amateur Jumper Championship

451 Coaching - Appointments

465 Single/Pair Pony - Pleasure Turnout

466 Single/Pair Pony - Scurry

467 Single/Pair Pony Championship



TENTATIVE TIME SCHEDULE
Tuesday, May 28, 2024

DIXON OVAL - 8:00 AM

- 124 Green Hunter 3'6" Handy
- 125 Green Hunter 3'6" Stake
- 126 Green Hunter 3'6" Ch.
- 105 Green Conformation Hunter Handy
- 106 Green Conformation Hunter Stake
- 107 Green Conformation Hunter Ch.
- 134 Green Hunter 3'9" Handy
- 135 Green Hunter 3'9" Stake
- 136 Green Hunter 3'9" Ch.
- 111 Model High Perf. Conformation Hunter
- 114 High Perf. Conformation Hunter
- 115 High Perf. Conformation Hunter
- 142 High Perf. Working Hunter
- 143 High Perf. Working Hunter

WHEELER RING - 9:00 AM

- 261 Five Yr. Young Jumper - Table II
- 263 Six Yr. Young Jumper - Table II, 2(b)
- 265 Seven Yr. Young Jumper - II, 2(b)

DIXON OVAL - 7:00 PM

Set Course - 5:30pm
 Course Walk - 6:30pm

**240 Jet Run Devon Welcome Stake
 FEI 238.2.1a**

- 452 Coaching Pleasure
- 457 Coach Horn Competition
- 468 Single Horse Pleasure Driving Turnout
- 469 Single Horse Scurry
- 470 Single Horse Championship



Photo: Kind Media LLC



**FOR GRAND PRIX NIGHT
 THURSDAY EVENING MAY 30
 RESERVED SEATING TICKETS MUST
 BE PURCHASED FOR ALL SECTIONS
 IN ALL GRANDSTANDS**

Email: tickets@devonhorshow.com
 Telephone: (610)-688-2554

TENTATIVE TIME SCHEDULE

Wednesday, May 29, 2024

DIXON OVAL - 8:00 AM

- 113 High Perf. Conformation Hunter Handy
- 116 High Perf. Conformation Hunter Stake
- 112 High Perf. Conformation Hunter U/S
- 117 High Perf. Conformation Hunter Ch.
- 144 High Perf. Working Hunter Handy
- 145 High Perf. Working Hunter Stake
- 141 High Perf. Working Hunter U/S
- 146 High Perf. Working Hunter Ch.
- 147 High Perf. Working Hunter
Leading Lady Rider Award
- 148 Leading Mare Award
- 149 Devon Grand Hunter Ch.
- 150 Devon Leading Hunter Rider
- 100 Leading Groom Award

WHEELER RING - 8:00 AM

- 262 Five Yr. Young Jmpr - Table II
- 264 Six Yr. Young Jmpr - Table II, 2(b)
- 266 Seven Yr. Young Jmpr - Table II, 2(b)
- 189 Ladies Side Saddle Under Saddle
- 190 Ladies Side Saddle Hunter Hack
- 188 Ladies Side Saddle Over Fences
- 191 Ladies Side Saddle Ch.

DIXON OVAL - 1:00 PM

- 426 Harness Pony - Limit
- 381 Saddlebred Show Pleasure Driving
- 356 Junior/Novice Three Gaited
- 415 Limit Hackney Pony
- 445 English Pleasure Driving - Open
- 405 Junior Park Pleasure
- 411 Hackney Horse - Open
- 386 Three Gaited Show Pleasure - Limit
- 435 Roadster Pony - Limit
- 377 Open Breed Fine Harness
- 365 Junior/Novice Five Gaited
- 414 Hackney Pony - Open
- 401 Park Horse - Amateur

DIXON OVAL - 7:00 PM

Set Course - 4:00pm

Course Walk - 6:00pm

242 Main Line Challenge FEI 274.2.5

- 453 Coaching Timed Obstacle
- 361 Five Gaited - Ladies
- 431 Roadster Horse - Amateur
- 357 Three Gaited - Open
- 367 Five Gaited - Open
- 436 Roadster Pony - Open
- 425 Harness Pony - Open
- 352 Three Gaited - Ladies
- 374 Fine Harness - Open



EXHIBITORS LOUNGE

*Relax in the climate-controlled
Exhibitors Lounge!*

Located adjacent to the back
entrance gate and Groom's Kitchen

All Exhibitors and Support Team stop on in for
snacks, drinks and coffee

Wifi and Live Feed

Open Daily (hours vary)

Please show Wristband

TENTATIVE TIME SCHEDULE
Thursday, May 30, 2024

DIXON OVAL - 9:00 AM

8:15 AM Course Walk

**180 \$25,000 USHJA International
Hunter Derby**

WHEELER RING - 12:00PM

211 1.40m Amateur Jumper - Table II, 2(b)

DIXON OVAL - 2:00 PM

Devon at Sunset

372 USEF Saddle Seat Medal (17 and under)

396 Country Pleasure Driving

447 English Pleasure - Hunt Seat – Open

391 Western Country Pleasure

481 Park Horse - Junior Exhibitor

413 Hackney Pony - Amateur

394 Country Pleasure - Adult

360 Five Gaited - Junior Exhibitor

424 Harness Pony - Amateur

406 Open Park Pleasure

373 Fine Harness - Amateur

421 Hackney Pleasure Pony Driving

388 Five Gaited Pleasure

403 Park Horse - Open

454 Coaching - Performance

385 Three Gaited Show Pleasure - Adult

432 Roadster Horse - Open

353 Three Gaited - Amateur

408 English Pleasure - Open

434 Roadster Pony - Amateur

363 Five Gaited - Amateur

DIXON OVAL - 7:00 PM

Set Course - 5:45pm

Course Walk - 6:45pm

Opening Ceremonies - 7:15pm

**243 Sapphire Grand Prix of Devon
FEI 238.2.2a**

244 McDevitt Style Award

TENTATIVE TIME SCHEDULE
Friday, May 31, 2024

DIXON OVAL - 8:00 AM

152 AO Hunter 18-35

153 AO Hunter 18-35

158 AO Hunter 36+

159 AO Hunter 36+

157 AO Hunter 36+ U/S

151 AO Hunter 18-35 U/S

379 Saddle Seat Equitation

382 ASB Show Pleasure Driving Ch.

400 Three Gaited Country Pleasure - Local

439 Roadster Pony Under Saddle

398 ASB Hunter Country Pleasure

383 Three Gaited Pleasure - Junior Exhibitor

418 Hackney Pony to a Gig

446 English Pleasure Driving - Open Ch.

351 Three Gaited - Junior Exhibitor

392 Western Country Pleasure Championship

427 Open Harness Pony Championship

393 Country Pleasure - Junior Exhibitor

390 Three Gaited English Show Pleasure -
Local

409 English Pleasure - Ladies

WHEELER RING - 7:30 AM

212 1.40m Amateur Jumper - Table II, sec 1

166 AO Hunter 3'3" 18-35

171 AO Hunter 3'3" 36+

182 Local Hunter

183 Local Hunter

DIXON OVAL - 7:00 PM

Set Course - 4:30pm

Course Walk - 6:00pm

Opening Ceremonies - 6:45pm

245 Devon Speed Derby FEI Table C

455 Coaching - Timed Obstacle

458 Coach Horn Competition

456 Coaching Championship

368 Five Gaited Stake

437 Roadster Pony Championship

402 Park Horse Stake - Amateur

378 Open Fine Harness Championship

358 Three Gaited Stake

416 Open Hackney Pony Championship

375 Fine Harness Championship

TENTATIVE TIME SCHEDULE
Saturday, June 1, 2024

DIXON OVAL - 7:30 AM

- 154 AO Hunter 18 - 35 Handy
- 155 AO Hunter 18 - 35 Stake
- 156 AO Hunter 18 - 35 Ch.
- 160 AO Hunter 36+ Handy
- 161 AO Hunter 36+ Stake
- 162 AO Hunter 36+ Ch.
- 163 Devon Grand AO Hunter Ch.
- 164 Devon Leading AO Hunter Rider
- 176 Sambalino Award
(A/O Hunter 3'3" awards)
- 380 Saddle Seat Equitation Championship
- 407 Park Pleasure Stake
- 440 Roadster Pony Under Saddle Ch.
- 399 ASB Hunter Country Pleasure Ch.
- 423 Hackney Pleasure Driving Championship
- 442 Junior Exhibitor Country Pleasure Ch.
- 397 Country Pleasure Driving Championship
- 438 Roadster Pony Ch. - Amateur
- 448 English Pleasure Hunt Seat- Open Ch.
- 395 ASB Country Pleasure Championship
- 412 Hackney Horse Championship
- 384 Junior Exhibitor Show Pleasure Ch.

SET COURSE

(Local Hunter Awards - during course walk)

- 213 1.45m Amateur Jumper
- SJHOF Classic -Table II, 2(a)
- 214 1.40/1.45m Amateur Jumper Championship
- 215 Amateur Jumper Leading Rider

WHEELER RING - 7:30 AM

- 172 AO Hunter 3'3" 36+ Handy
- 173 AO Hunter 3'3" 36+ Stake
- 170 AO Hunter 3'3" 36+ U/S
- 174 AO Hunter 3'3" 36+ Ch.
- 167 AO Hunter 3'3" 18 - 35 Handy
- 168 AO Hunter 3'3" 18 - 35 Stake
- 165 AO Hunter 3'3" 18-35 U/S
- 169 AO Hunter 3'3" 18 - 35 Ch.
- 175 Grand AO Hunter Ch.
- 184 Local Hunter Stake
- 181 Local Hunter U/S
- 185 Local Hunter Ch.
- 186 Local Hunter Sportsmanship Award
- 187 Working Fox Hunter

DIXON OVAL - 7:00 PM

Set Course - 5:00pm

Course Walk - 6:00pm

Devon Derby Drawing - 6:45pm

246 Idle Dice Jumper Stake FEI 238.2.2a

- 247 Open Jumper Championship.
- 248 Leading Open Jumper Rider
- 249 Leading Lady Rider
- 364 Five Gaited Stake - Amateur
- 433 Roadster Horse Ch.
- 387 Three Gaited Show Pleasure Ch.
- 354 Junior/Amateur Three Gaited Ch.
- 428 Hackney / Harness Pony Amateur Ch.
- 389 Five Gaited Pleasure Championship
- 376 Fine Harness Championship - Amateur
- 404 Park Horse Stake
- 417 Hackney Pony Championship - Amateur
- 410 English Pleasure Championship



TENTATIVE TIME SCHEDULE

Sunday, June 2, 2024

DIXON OVAL - 8:00 AM

283 PA Bred Yearling Colts/Geldings

284 PA Bred Yearling Fillies

285 PA Bred 2 Yr Old Colts/Geldings

286 PA Bred 2 Yr Old Fillies

287 PA Bred 3 Yr Old

289 Best PA Bred Horse

292 Leading PA Handler Award

271 Thoroughbred Yearling Colts/Geldings

272 Thoroughbred Yearling Fillies

273 Non-Thoroughbred Yearling Colts/Geldings

274 Non-Thoroughbred Yearling Fillies

275 Thoroughbred 2 Year Old Colts/Geldings

276 Thoroughbred 2 Year Old Fillies

277 Non-Thoroughbred 2 Yr Old Colts/Geldings

278 Non-Thoroughbred 2 Yr Old Fillies

279 Thoroughbred 3 Year Old

279A Best Thoroughbred

280 Non-Thoroughbred 3 Year Old
Stallions & Geldings

281 Non-Thoroughbred 3 Year Old Mares

282 Mare Suitable to Produce

288 Best Yearling

290 Best Young Horse

291 Leading Handler Award

293 Amateur/Junior Handler

294 PHSA Young Hunter U/S

295 Open Young Hunter U/S



Billy Howland; 2023 Leading Handler.

Photo: Kind Media LLC



DEVON HORSE SHOW & COUNTRY FAIR

Bio Security Form

All horses must be accompanied by the following:

1. A **STATEMENT OF HEALTH** consisting of Certificate of Veterinary Inspection (found below).
2. A **VALID COGGINS CERTIFICATE** issued within 1 year prior to start of show must be presented at the show office in order to pickup numbers.

CERTIFICATE OF VETERINARY INSPECTION

One form per horse to be completed by veterinarian

Name of Horse: _____

Name of Owner: _____

DATE AND NAME OF RECENT VACCINATIONS

Date for EHV-1/4: _____ Vaccine Name: _____

Date for EIV: _____ Vaccine Name: _____

1. The horse named above has been enrolled in a regular and consistent program of vaccination against EHV-1/4 and EIV with the most recent booster being administered within six months prior to start of show.
2. Has not shown any symptoms of, or been treated for, EHV-1/4 and EIV within the past 28 days.
3. Has not been exposed to any horses that have shown any symptoms of or been treated for, EHV-1/4 and EIV within the past 28 days.

Veterinarian: _____ Date: _____
(please print)

Veterinarian Signature: _____



DEVON HORSE SHOW & COUNTRY FAIR

Advance Feed & Bedding Information

Feed & Bedding for the 2024 Devon Horse Show
can be ordered online at:

<https://stallinfo.net/devon-horse-show>

ORDERS PLACED AFTER 3:00 PM WILL BE DELIVERED NEXT DAY

- BEDDING:** BAGGED SHAVINGS
 STRAW
- FEED:** IMPACT PELLET 12%
 OMOLINE 100
 OMOLINE 200
 TRIPLE CROWN ALFALFA FORAGE
 TRIPLE CROWN GRASS FORAGE
 TRIPLE CROWN SAFE STARCH
 EQUINE SENIOR
 BEET PULP W/O MOLASSES
 BRAN 50LB BAG
- HAY:** STRAIGHT TIMOTHY HAY
 ALFALFA
 ALFALFA CUBES



DEVON HORSE SHOW & COUNTRY FAIR

Credit Card Authorization Form

The Devon Horse Show will offer the convenience of charging your fees to your MasterCard or Visa.

TRAINER NAME: _____

CHARGE FEES FOR THESE HORSES TO THIS CREDIT CARD (Horse's Name/Owner):

CREDIT CARD INFORMATION

Visa or MasterCard ONLY • All fields required to process your order

Cardholder Name (required): _____

Cardholder Billing Address (required): _____

Cardholder City, State, Zip (required): _____

Card Number (required) : _____ - _____ - _____ - _____

Card Expiration (required): ____ / ____

Card Security Code (CVW number required): _____

The card security code is the 3 digit number found on the back of the card in the signature block.

Phone Number: (_____) - _____ - _____

I hereby authorize The Devon Horse Show to debit my account:

Cardholder Signature: _____

Printed Name: _____

Please go to www.devonhorseshow.net to download additional copies of this form.

Cards declined for any reason are subject to a \$50 Service Fee.



WCHR

WORLD CHAMPIONSHIP HUNTER RIDER

Welcome to the 2024
World Championship Hunter Rider Series!

Be part of the fun in 2024!

Scan the code to see the full calendar
of 2024 WCHR Events.



JAMES MEDIA, SARAH LINDA, LISA HILL, RALPH, HILL DESIGNS, SPORT PHOTO, ANDREW

Peter Wetherill Palm Beach Spectacular
February 13-18, 2024



Capital Challenge
September 30- October 6, 2024



West Coast Spectacular
March 13-17, 2024



Central Spectacular
June 19-23, 2024

United States Hunter Jumper Association has chosen Devon to host the
2024 International Hunter Derby Class
NORTH - Zones 1 & 2

\$45,000 PONY HUNTER SECTION

The Committee will limit the number of entries accepted in this division. See page 10.

No rider may ride more than a total of three ponies with a maximum of two ponies in each section. You may enter as many ponies as you wish. Every pony must have a current measurement card, or a valid measurement form issued by US Equestrian. Small ponies (not exceeding 12.2 hands) to jump 2'3", Medium ponies (over 12.2 hands but not exceeding 13.2 hands) to jump 2'6", and Large ponies (over 13.2 hands but not exceeding 14.2 hands) to jump 3'. Classes to be judged on performance and soundness except where otherwise noted. Manners and suitability of a pony for a rider shall be emphasized and extreme speed shall be penalized. Full points in all classes. Where trophies are involved, the judges shall select the pony from the sections involved which in their opinion had the better performance.

**ENTRY FEE FOR CLASSES 2 - 6, 7 - 11, OR 13 - 17 IS \$1,700
INDIVIDUAL CLASSES MAY NOT BE ENTERED.**

\$15,000 SMALL PONY HUNTER

CLASS 1

\$2,000 SMALL PONY HUNTER UNDER SADDLE

CLASSES 2, 3, 4, (HANDY)

\$3,000 SMALL PONY HUNTER

Conformation 25% in class 2.

CLASS 5

\$4,000 SMALL PONY HUNTER STAKE

CLASS 6

SMALL PONY HUNTER CHAMPION AND RESERVE CHAMPION

Champion Ribbon; Reserve Champion Ribbon

\$15,000 MEDIUM PONY HUNTER

CLASS 7

\$2,000 MEDIUM PONY HUNTER UNDER SADDLE

CLASSES 8, 9, 10 (HANDY)

\$3,000 MEDIUM PONY HUNTER

Conformation 25% in class 8.

CLASS 11

\$4,000 MEDIUM PONY HUNTER STAKE

CLASS 12

MEDIUM PONY HUNTER CHAMPION AND RESERVE CHAMPION

Trophy and Champion Ribbon; Reserve Champion Ribbon

\$15,000 LARGE PONY HUNTER

CLASS 13

\$2,000 LARGE PONY HUNTER UNDER SADDLE

CLASSES 14, 15, 16 (HANDY)

\$3,000 LARGE PONY HUNTER

Conformation 25% in class 14.

CLASS 17

\$4,000 LARGE PONY HUNTER STAKE

CLASS 18

LARGE PONY HUNTER CHAMPION AND RESERVE CHAMPION

Trophy and Champion Ribbon; Reserve Champion Ribbon

CLASS 19

DEVON GRAND PONY HUNTER CHAMPIONSHIP

Awarded to the pony that has acquired the greatest number of points in the Pony Hunter division.

Ties broken under HU152

Trophy and Grand Champion Ribbon

CLASS 20

PONY SPORTSMANSHIP AWARD

Awarded to the rider in the Pony Hunter division who displays exemplary sportsmanship throughout junior weekend at the Devon Horse Show.

CLASS 21

BEST CHILD RIDER ON A PONY

To be awarded to the junior exhibitor entered and showing in the Pony Hunter section, who in the opinion of the judges is the best rider. Riders may compete in EITHER class 21 (pony) or class 78 (horse), but not both.

Entry Fee \$40

Trophy and Four Ribbons per class

Prize Money Purses will be distributed as follows in the Hunter divisions.

PURSE	1st	2nd	3rd	4th	5th	6th	7th	8th
\$200	75	50	30	20	15	10	R	R
\$250	85	55	40	30	25	15	R	R
\$2,000	600	440	300	200	140	120	100	100
\$2,500	750	550	375	250	175	150	125	125
\$3,000	900	660	450	300	210	180	150	150
\$3,500	1050	770	525	350	245	210	175	175
\$4,000	1200	880	600	400	280	240	200	200
\$4,500	\$1,350	\$990	\$675	\$450	\$315	\$270	\$225	\$225
\$5,000	\$1,500	\$1,100	\$750	\$500	\$350	\$300	\$250	\$250

JUNIOR HUNTER 3'3" SECTION

The Committee will limit the number of entries accepted in this division. See page 10.

Points won at no more than 15 shows in a single height section (regardless of rider's age) will be considered. No rider may ride more than two horses in each section. You may enter as many horses as you wish.

Small Junior must have a current measurement card, or a valid measurement form issued by US Equestrian. In all classes over fences jumps at 3'3". Classes to be judged on performance and soundness except where otherwise noted. Manners and suitability shall be emphasized and extreme speed shall be penalized. Full points in all classes. Where trophies are involved, the judges shall select the horse from the sections involved which in their opinion has had the better performance.

\$12,500 SMALL JUNIOR HUNTER 3'3"

THE ENTRY FEE FOR CLASSES 22 - 25 IS \$1,350

INDIVIDUAL CLASSES MAY NOT BE ENTERED.

CLASS 22 \$2,500 SMALL JUNIOR HUNTER UNDER SADDLE - 3'3"

CLASSES 23, 24 (HANDY) \$3,000 SMALL JUNIOR HUNTER - 3'3"

CLASS 25 \$4,000 SMALL JUNIOR HUNTER 3'3" STAKE - 3'3"

CLASS 26 SMALL JUNIOR HUNTER 3'3", CHAMPION & RESERVE - 3'3"

Trophy and Champion Ribbon; Reserve Ribbon

\$12,500 LARGE JUNIOR HUNTER 3'3"

THE ENTRY FEE FOR CLASSES 27 - 30 IS \$1,350

INDIVIDUAL CLASSES MAY NOT BE ENTERED.

CLASS 27 \$2,500 LARGE JUNIOR HUNTER UNDER SADDLE - 3'3"

CLASSES 28, 29 (HANDY) \$3,000 LARGE JUNIOR HUNTER - 3'3"

CLASS 30 \$4,000 LARGE JUNIOR HUNTER STAKE - 3'3"

CLASS 31 LARGE JUNIOR HUNTER 3'3", CHAMPION & RESERVE

Trophy and Champion Ribbon; Reserve Ribbon

CLASS 32 OVERALL JUNIOR HUNTER 3'3" GRAND CHAMPION

\$60,000 JUNIOR HUNTER 3'6" SECTION

The Committee will limit the number of entries accepted in this division. See page 10.

Points won at no more than 15 shows in a single height section (regardless of rider's age) will be considered. No rider may ride more than two horses in each section. You may enter as many horses as you wish.

Entries will be qualified and accepted in only the height and age section entered and may not change for any reason. Horses may show in only one age group/height section.

Small Junior must have a current measurement card, or a valid measurement form issued by US Equestrian. In all classes over fences jumps at 3'6". Classes to be judged on performance and soundness except where otherwise noted. Manners and suitability shall be emphasized and extreme speed shall be penalized. Full points in all classes. Where trophies are involved, the judges shall select the horse from the sections involved which in their opinion has had the better performance.

**ENTRY FEE FOR CLASSES 35 - 38, 41 - 44, 51 - 54 OR 61 - 64 IS \$1,700
INDIVIDUAL CLASSES MAY NOT BE ENTERED.**

\$15,000 SMALL JUNIOR HUNTER 3'6" 15 & UNDER

CLASS 35

\$3,000 SMALL JUNIOR HUNTER, 15 & UNDER, UNDER SADDLE

CLASSES 36, 37 (HANDY)

\$3,500 SMALL JUNIOR HUNTER, 15 & UNDER

CLASS 38

\$5,000 SMALL JUNIOR HUNTER, 15 & UNDER, STAKE

CLASS 39

SMALL JUNIOR HUNTER, 15 & UNDER, CHAMPION AND RESERVE CHAMPION

Trophy and Champion Ribbon; Reserve Champion Ribbon

\$15,000 SMALL JUNIOR HUNTER 3'6" 16 & 17

CLASS 41

\$3,000 SMALL JUNIOR HUNTER, 16 & 17, UNDER SADDLE

CLASSES 42, 43 (HANDY)

\$3,500 SMALL JUNIOR HUNTER, 16 & 17

CLASS 44

\$5,000 SMALL JUNIOR HUNTER, 16 & 17, STAKE

CLASS 45

SMALL JUNIOR HUNTER, 16 & 17, CHAMPION AND RESERVE CHAMPION

Trophy and Champion Ribbon; Reserve Champion Ribbon

\$15,000 LARGE JUNIOR HUNTER 15 & UNDER

CLASS 51

\$3,000 LARGE JUNIOR HUNTER, 15 & UNDER, UNDER SADDLE

CLASSES 52, 53 (HANDY)

\$3,500 LARGE JUNIOR HUNTER, 15 & UNDER

CLASS 54

\$5,000 LARGE JUNIOR HUNTER, 15 & UNDER, STAKE

CLASS 55

**LARGE JUNIOR HUNTER, 15 & UNDER, CHAMPION AND RESERVE CHAMPION
Trophy and Champion Ribbon; Reserve Champion Ribbon**

\$15,000 LARGE JUNIOR HUNTER 16 & 17

CLASS 61

\$3,000 LARGE JUNIOR HUNTER, 16 & 17, UNDER SADDLE

CLASSES 62, 63 (HANDY)

\$3,500 LARGE JUNIOR HUNTER, 16 & 17

CLASS 64

\$5,000 LARGE JUNIOR HUNTER, 16 & 17, STAKE

CLASS 65

**LARGE JUNIOR HUNTER, 16 & 17, CHAMPION AND RESERVE CHAMPION
Trophy and Champion Ribbon; Reserve Champion Ribbon**

CLASS 66

**OVERALL SMALL JUNIOR HUNTER CHAMPION
Trophy and Champion Ribbon**

CLASS 67

**OVERALL LARGE JUNIOR HUNTER CHAMPION
Trophy and Champion Ribbon**

CLASS 68

DEVON GRAND JUNIOR HUNTER CHAMPIONSHIP

Awarded to the horse which has acquired the greatest number of points in the Junior Hunter division. Ties broken under HU152.

Trophy and Grand Champion Ribbon

CLASS 69 - ANGELO AWARD

To be presented to the Junior Hunter horse who, in the opinion of the judges, best exemplifies the classic hunter horse in movement, jumping style, and presence. This award is not based on points won in the show.

Trophy

CLASS 78 - BEST CHILD RIDER ON A HORSE

To be awarded to the junior exhibitor entered and showing in the Hunter Seat Equitation and/or Junior Hunter sections, who in the opinion of the judges is the best rider. Riders may compete in EITHER class 77 (pony) or class 78 (horse), but not both.

Entry Fee \$40

Trophy and Four Ribbons per class



*Kat Fuqua
& Consent*

**2023 Devon Grand
Junior Hunter
Champions**

Photo: Kind Media LLC ©



Avery Glynn

**2023 Devon
Best Child Rider
on a Horse**

Photo: Kind Media LLC ©



**Lilly Epstein
2023 Devon
Best Child Rider
on a Pony**

Photo: Kind Media LLC ©

EXHIBITION CLASSES

To be run under US Equestrian rules regarding Exhibition classes.

LEAD LINE

CLASS 71 - LEAD LINE THREE YEARS AND UNDER

CLASS 72 - LEAD LINE FOUR AND FIVE YEARS

To be ridden by a child who has not reached his or her 4th or 6th birthday as of Dec. 1 of the preceding year. To be judged on manners and suitability of pony to rider. Children riding in this class are not eligible to compete in any other class. Post-entries accepted up to 10:00 am the day of class. One handler per entry. Handler must be at least 18 years of age.

Proper headgear required as per US Equestrian rules. Complete one entry blank per horse. Leadline entries are exempt from US Equestrian fees & US Equestrian/USHJA Membership Fees.

Entry Fee: \$65 | Day of Class - \$150

Trophy to Winner, Ribbons to All

CLASS 73

HUNT TEAMS - PONIES

Open only to ponies who have competed in one of the regular pony hunter sections. Teams of three ponies, shown over a course in the ring, one to follow the other at a safe hunting distance. Combined ownership permitted. Judged on performance, suitability, manners, uniformity and appearance as a team. Fences: 2'3" for ponies not exceeding 12.2; 2'6" for ponies not exceeding 13.2 and 3' for ponies over 13.2. Pony and/or rider may only compete on one team. Optional music permitted, to be formatted in CD or MP3 file submitted by 2:00 pm at the Wheeler Ring Announcer's Stand.

Post-entries ONLY, accepted until noon on Saturday. Entry fee \$150 per team paid at time of entry.

Trophies and Nine Sets of Six Ribbons

CLASS 74

HUNT TEAMS - HORSES

Teams of three, shown over a course in the ring, one to follow the other at a safe hunting distance. Combined ownership permitted. Judged on performance, suitability, manners, uniformity and appearance as a team. Jumps approximately 3'. Horses and/or rider may only compete on one team. Ponies not entered elsewhere in this show may compete if ridden by an adult. If the horse is not previously entered in the show, please bring Coggins papers for presentation at time of entry.

Post-entries ONLY, accepted until 5:00 pm Saturday. Entry Fee \$150 per team paid at time of entry.

Trophy and Three Sets of Six Ribbons

CLASS 75

FAMILY CLASS

For the purposes of this class, family is defined as husband, wife, parent, step-parent, child, step-child, brother, sister, half brother or sister, aunt, uncle, niece, nephew, grandmother, grandfather, grandchildren, and in-laws of the same relation as stated above. In all cases the word "family" is to be used rather than a list of specific relations. Horses and/or ponies to be shown under saddle at a walk, trot and canter. Manners and suitability of mounts to riders especially to be considered. Post-entries accepted until 5:00 pm Saturday.

Entry Fee \$75 per family - After 4/29-\$100

Trophy and Six Sets of Six Ribbons

CLASS 76

PARENT AND CHILD CLASS

To be ridden by parent and child, over jumps not to exceed 3 feet. Each horse or pony limited to one team. Performance, 75%; suitability of mounts to riders, 25%.

Post-entries accepted until 5:00 pm Saturday. Entry Fee \$50 per team entry After 4/29-\$75

Trophy and Two Sets of Six Ribbons

EQUITATION DIVISION

If there are 50 or more entries prior to the start of any class, the class will be divided.

WIHS Equitation will be run as a California Split, per US Equestrian rules.

CLASS 81

DOVER SADDLERY US EQUESTRIAN HUNTER SEAT MEDAL CLASS

Entry Fee \$200 Trophy and Ten Ribbons

CLASS 82

ASPCA MACLAY HORSEMANSHIP CLASS

Entry Fee \$200

Trophy and Ten Ribbons

CLASS 83

WIHS EQUITATION CLASSIC - JUMPER PHASE

Entry Fee \$200

Trophy and Ten Ribbons

CLASS 84

PLATINUM PERFORMANCE USEF SHOW JUMPING TALENT SEARCH 3*

Entry Fee \$200

Trophy and Ten Ribbons

CLASS 85

R.W. "RONNIE" MUTCH EQUITATION CHAMPIONSHIP

To be awarded to the rider who accrues the most points in classes 81, 82, 83, and 84. All classes to count 7, 5, 4, 3, 2, 1.

Challenge Trophy and Championship Ribbon

CLASS 86

WILLIAM COONEY JUNIOR EQUITATION "BEST IN STYLE & SPORTSMANSHIP"

To be awarded to the rider in classes 81-84 judged best in perspective of style of rider, horse jumping form, rider and horse turnout, and overall horsemanship.

Perpetual Award and Trophy



*Carlee McClutcheon and Avery Glynn
2023 R.W. Mutch Equitation Champions. Photo: Kind Media LLC ©*

\$15,000 GREEN CONFORMATION HUNTER SECTION

The committee will limit the number of entries accepted in this section. See page 11.
In classes over fences, horses to jump 3'6". In classes under saddle, horses are not required to hand gallop. All classes to be judged 70% on performance and soundness and 30% on conformation, except where otherwise noted. Full points in all classes except the Model, which is half points.

**THE ENTRY FEE FOR CLASSES 101 - 106 IS \$1,700
INDIVIDUAL CLASSES MAY NOT BE ENTERED.**

CLASS 101 GREEN CONFORMATION HUNTER MODEL

Shown in hand. To be judged on conformation, way of moving and soundness.
No additional entry fee.

CLASS 102 \$2,000 GREEN CONFORMATION HUNTER UNDER SADDLE

CLASSES 103, 104, 105 (HANDY) \$3,000 GREEN CONFORMATION HUNTER

CLASS 106 \$4,000 GREEN CONFORMATION HUNTER STAKE

CLASS 107 GREEN CONFORMATION HUNTER CHAMPION AND RESERVE CHAMPION

Trophy and Champion Ribbon; Reserve Champion Ribbon

\$15,000 HIGH PERFORMANCE CONFORMATION HUNTER SECTION

The committee will limit the number of entries accepted in this section. See page 11.
In classes over fences, horses to jump 3'9". All classes to be judged 70% on performance and soundness and 30% on conformation, except where otherwise noted. Full points in all classes, except the Model, which is half points.

**ENTRY FEE FOR CLASSES 111 - 116 IS \$1,700
INDIVIDUAL CLASSES MAY NOT BE ENTERED.**

CLASS 111 HIGH PERFORMANCE CONFORMATION HUNTER MODEL

Shown in hand. To be judged on conformation, way of moving and soundness.
No additional entry fee.

CLASS 112 \$2,000 HIGH PERFORMANCE CONFORMATION HUNTER UNDER SADDLE

CLASSES 113 (HANDY), 114, 115 \$3,000 HIGH PERFORMANCE CONFORMATION HUNTER

CLASS 116 \$4,000 HIGH PERFORMANCE CONFORMATION HUNTER STAKE

CLASS 117 HIGH PERFORMANCE CONFORMATION HUNTER CHAMPION AND RESERVE CHAMPION

Trophy and Champion Ribbon; Reserve Champion Ribbon

\$15,000 GREEN HUNTER 3'6" SECTION

The committee will limit the number of entries accepted in this section. See page 10.

In classes over fences, horses to jump 3'6". In classes under saddle, horses are not required to hand gallop.

All classes to be judged on performance and soundness, unless otherwise noted. Full points in all classes.

ENTRY FEE FOR CLASSES 121 - 125 IS \$1,700

INDIVIDUAL CLASSES MAY NOT BE ENTERED

CLASS 121 \$2,000 GREEN HUNTER 3'6" UNDER SADDLE

CLASSES 122, 123, 124 (HANDY) \$3,000 GREEN HUNTER 3'6"

CLASS 125 \$4,000 GREEN HUNTER 3'6" STAKE

CLASS 126 GREEN HUNTER 3'6" CHAMPION AND RESERVE CHAMPION

Trophy and Champion Ribbon; Reserve Champion Ribbon

\$15,000 GREEN HUNTER 3'9" SECTION

The committee will limit the number of entries accepted in this section. See page 10.

In classes over fences, horses to jump 3'9". In classes under saddle, horses are not required to hand gallop.

All classes to be judged on performance and soundness, unless otherwise noted. Full points in all classes.

ENTRY FEE FOR CLASSES 131 - 135 IS \$1,700

INDIVIDUAL CLASSES MAY NOT BE ENTERED.

CLASS 131 \$2,000 GREEN HUNTER 3'9" UNDER SADDLE

CLASSES 132, 133, 134 (HANDY) \$3,000 GREEN HUNTER 3'9"

CLASS 135 \$4,000 GREEN HUNTER 3'9" STAKE

CLASS 136 GREEN HUNTER 3'9"

CHAMPION AND RESERVE CHAMPION

Trophy and Champion Ribbon; Reserve Champion Ribbon

\$16,000 HIGH PERFORMANCE WORKING HUNTER

The committee will limit the number of entries accepted in this section. See page 10.

In classes over fences, jumps at 4'. All classes to be judged on performance and soundness.

Full points in all classes.

ENTRY FEE FOR CLASSES 141 - 145 IS \$1,800

Individual classes may be entered by horses already accepted in another section

with a class entry fee of 10% of the class prize money.

CLASS 141 \$2,500 HIGH PERFORMANCE WORKING HUNTER UNDER SADDLE

CLASSES 142, 143, 144 (HANDY) \$3,000 HIGH PERFORMANCE WORKING HUNTER

CLASS 145 \$4,500 HIGH PERFORMANCE WORKING HUNTER STAKE

CLASS 146 HIGH PERFORMANCE WORKING HUNTER

CHAMPION AND RESERVE CHAMPION

Trophy and Champion Ribbon; Reserve Champion Ribbon

CLASS 147

HIGH PERFORMANCE WORKING HUNTER LEADING LADY RIDER AWARD

Trophy and Champion Ribbon

CLASS 148 LEADING MARE

This award will be presented to the mare who has accumulated the greatest number of points in one or more of the following sections throughout the show. Model classes not to count.

GREEN CONFORMATION HUNTER

HIGH PERFORMANCE CONFORMATION HUNTER

GREEN HUNTER 3'6"

GREEN HUNTER 3'9"

HIGH PERFORMANCE WORKING HUNTER

Championship Ribbon

CLASS 149 DEVON GRAND HUNTER CHAMPIONSHIP

This award will be presented to the horse which has accumulated the greatest number of points in one of the following sections throughout the show. Model classes not to count. A section must include a minimum of eight entries to be considered for this award. In the case of a tie, the winning horse will be decided on the basis of HU152.

GREEN CONFORMATION HUNTER

HIGH PERFORMANCE CONFORMATION HUNTER

GREEN HUNTER 3'6"

GREEN HUNTER 3'9"

HIGH PERFORMANCE WORKING HUNTER

Trophy and Championship Ribbon

CLASS 150 DEVON LEADING HUNTER RIDER

This award will be presented to the rider who has accumulated the greatest number of points in one or more of the following sections throughout the show. Model classes not to count. If a rider rides more than one horse in a class, only the points on the top placed horse will count.

GREEN CONFORMATION HUNTER

HIGH PERFORMANCE CONFORMATION HUNTER

GREEN HUNTER 3'6"

GREEN HUNTER 3'9"

HIGH PERFORMANCE WORKING HUNTER

Trophy



Nick Haness, 2023 Devon Leading Hunter Rider. Photo: Kind Media LLC ©

\$55,000 AMATEUR OWNER HUNTER SECTION

The Committee will limit the number of entries accepted in this section. See page 10.

In each section riders will be limited to 2 horses. Entries will be qualified in only the age section entered and may not change sections for any reason. To be ridden by an Amateur owner or Amateur member of the owner's family who is no longer eligible to compete as a Junior Exhibitor. Leased horses are not eligible and multiple ownership is not permitted unless all owners are members of the same family. An Amateur who rides for a person outside the family may not ride in a class restricted to Amateur Owners in the same show, HU105. All Amateur Owner riders must show Amateur certification. Classes to be judged on performance and soundness except where otherwise noted. Manners and suitability shall be emphasized, and extreme speed shall be penalized. Full points in all classes.

**THE ENTRY FEE FOR CLASSES 151 - 155 OR 157 - 161 IS \$1,700
INDIVIDUAL CLASSES MAY NOT BE ENTERED.**

**\$15,000 AMATEUR OWNER HUNTER 3'6"
18 to 35 years of age**

CLASS 151 \$2,000 AMATEUR OWNER HUNTER UNDER SADDLE - 18 to 35

CLASSES 152, 153, 154 (HANDY) \$3,000 AMATEUR OWNER HUNTER - 18 to 35

CLASS 155 \$4,000 AMATEUR OWNER HUNTER STAKE - 18 to 35

**CLASS 156 AMATEUR OWNER CHAMPION AND RESERVE - 18 to 35
Trophy and Champion Ribbon; Reserve Champion Ribbon**

**\$15,000 AMATEUR OWNER HUNTER 3'6"
36+ years of age**

CLASS 157 \$2,000 AMATEUR OWNER HUNTER UNDER SADDLE - 36+

CLASSES 158, 159, 160 (HANDY) \$3,000 AMATEUR OWNER HUNTER - 36+

CLASS 161 \$4,000 AMATEUR OWNER HUNTER STAKE - 36+

**CLASS 162 AMATEUR OWNER HUNTER CHAMPION & RESERVE - 36+
Trophy and Champion Ribbon; Reserve Champion Ribbon**

CLASS 163 DEVON GRAND AMATEUR OWNER HUNTER 3'6" CHAMPIONSHIP
Awarded to the horse that has acquired the greatest number of points in classes 151-155 or 157 to 161. Ties broken under HU152.

Trophy and Grand Champion Ribbon

CLASS 164 DEVON LEADING AMATEUR OWNER 3'6" HUNTER RIDER
Awarded to the rider who has accumulated the greatest number of points on one horse in classes 151-162.

Trophy and Grand Champion Ribbon

CLASS 176 THE SAMBALINO AWARD

To be awarded to the Amateur Owner Hunter 3'6" horse who, in the opinion of the judges, best exemplifies the classic hunter horse in movement, jumping style, and presence. This award is not based on points won in the show.

Trophy

\$12,500 AMATEUR OWNER HUNTER 3'3"

18 to 35 years of age

**THE ENTRY FEE FOR CLASSES 165 - 168 IS \$1,350
INDIVIDUAL CLASSES MAY NOT BE ENTERED.**

CLASS 165 \$2,500 AMATEUR OWNER HUNTER UNDER SADDLE - 3'3"

CLASSES 166, 167 (HANDY) \$3,000 AMATEUR OWNER HUNTER - 3'3"

CLASS 168 \$4,000 AMATEUR OWNER HUNTER STAKE - 3'3"

CLASS 169 AMATEUR OWNER HUNTER CHAMPION & RESERVE - 3'3"

Trophy and Champion Ribbon; Reserve Champion Ribbon

\$12,500 AMATEUR OWNER HUNTER 3'3"

36+ years of age

**THE ENTRY FEE FOR CLASSES 170 - 173 IS \$1,350
INDIVIDUAL CLASSES MAY NOT BE ENTERED.**

CLASS 170 \$2,500 AMATEUR OWNER HUNTER UNDER SADDLE - 3'3"

CLASSES 171, 172 (HANDY) \$3,000 AMATEUR OWNER HUNTER - 3'3"

CLASS 173 \$4,000 AMATEUR OWNER HUNTER STAKE - 3'3"

CLASS 174 AMATEUR OWNER HUNTER CHAMPION & RESERVE - 3'3"

Trophy and Champion Ribbon; Reserve Champion Ribbon

CLASS 175 DEVON GRAND AMATEUR OWNER HUNTER 3'3" CHAMPIONSHIP

Awarded to the horse that has acquired the greatest number of points in classes 165-173.

Ties broken under HU152.

Trophy and Grand Champion Ribbon

CLASS 180

\$25,000 USHJA INTERNATIONAL HUNTER DERBY

Dedicated to Kenneth & Sallie Wheeler

Riders are limited to 3 horses

Horses showing in the International Hunter Derby must be present by 12:00 noon on Wednesday May 29th and remain on the grounds until the completion of the class on Thursday, May 30th. Check in at noon on Wednesday at the stabling office. Riders' meeting will take place before acclimation in the East Grandstand.

To be run under a two-round format. Horses showing in the hunter derby must be present and remain on the grounds 24 hours before the start of the class.

Round One: To be shown over a Hunter Classic type course with a minimum of 10 fences 3'6" to 4' in height, with four "option" fences set at 4' to 4'3" in height. To be judged on hunter style, quality, movement and brilliance.

Round Two: Open to the top 12 scoring horses from the first round. To be shown over a Handy Hunter type course. Fences at 3'6" to 4' in height, with four "option" fences set at 4' to 4'3" in height. To be judged on style, brilliance and handiness.

See www.ushja.org for complete judging and scoring specifications. Formal attire required.

Class Entry Fee: \$350

1st, Trophy and \$7500; 2nd, \$5500; 3rd, \$3250; 4th, \$2000; 5th, \$1500; 6th, \$1250; 7th, \$1000; 8th, \$750; 9th, \$750; 10th, \$500; 11th, \$500; 12th, \$500

LOCAL HUNTER SECTION

Horses to be owned by exhibitors living within a 40 mile radius of the Devon Horse Show grounds, based on owner's zip code. Owner listed on the entry blank must be the owner listed on the horse's USHJA registration papers or provide proof of ownership or lease. Judges are to select the horses apparently the most agreeable mounts to hounds; the main consideration being even hunting pace, manners, way of going and style of jumping. Hunting soundness is required. Jumps 3'3". **Any horse and/or rider competing in the Local Hunter section may not compete in any qualifying hunter class over fences, with the exception of class 187, or any jumper class.** If the number of entries in this section exceeds 50, this section will be divided by every other number and the prize money will be doubled. A scratch from this section is fully subject to the rules and procedures of the horse show (see page 12 of this prize list). A scratched entry is no longer eligible to receive exhibitor parking or exhibitor wristbands. Judged on performance and soundness. Horses not to jog.

See page 18 for information regarding stabling for Local Hunters.

**THE ENTRY FEE FOR CLASSES 181 - 184 IS \$350
INDIVIDUAL CLASSES IN THIS SECTION MAY NOT BE ENTERED**

CLASS 181 \$200 LOCAL HUNTER UNDER SADDLE

To be shown at a walk, trot and canter both ways of the ring. Light contact with horse's mouth is required. Horses may be asked to hand gallop collectively one way of the ring at the judge's discretion, but never more than eight at one time. Judged on performance and soundness. Martingales not permitted.

CLASS 182 \$200 LOCAL HUNTER

CLASS 183 \$200 LOCAL HUNTER

CLASS 184 \$250 LOCAL HUNTER STAKE

CLASS 185 LOCAL HUNTER CHAMPION AND RESERVE CHAMPION

Trophy and Champion Ribbon; Reserve Champion Ribbon

CLASS 186 LOCAL HUNTER SPORTSMANSHIP AWARD

CLASS 187 \$200 WORKING HUNTER - FOX HUNTING FIELD PERFORMANCE

Shown in the ring, no jumps over 3'3", arranged to represent obstacles ordinarily encountered in fox hunting. Judged on what judges consider the most preferable ride in the fox hunting field. No Points.

**Open to the top 4 placed competitors in each section in classes 182, 183 and 184.
No Additional Entry Fee**

LADIES HUNTER SIDE SADDLE SECTION

Riders are limited to one (1) horse in this section with the exception of class 188, where riders are limited to two (2) horses.

To be ridden by ladies who are no longer eligible to compete as junior exhibitors.
Stallions and ponies are not permitted.

CLASS 188

\$200 LADIES HUNTER SIDE SADDLE OVER FENCES

To be shown over a course of at least 8 fences, 3' in height. No in-and-out to be used.

Entry Fee \$50

CLASS 189

\$200 LADIES HUNTER SIDE SADDLE UNDER SADDLE

To be shown at a walk, trot and canter both ways of the ring in formal hunting attire with appointments. To be judged on performance and soundness with emphasis on manners 75%; formal hunting attire, appointments and general overall appearance of horse and rider 25%. Judges should give particular consideration to quality and condition of tack.

Entry Fee \$50

CLASS 190

\$200 LADIES HUNTER SIDE SADDLE HUNTER HACK

To be shown at a walk, trot and canter both ways of the ring. Judges may ask for a hand gallop, but no more than eight to hand gallop at one time. To jump two fences at 2'9". To be judged on performance and soundness with an emphasis on manners. Performance under saddle to count 50%, performance over fences to count 50%.

Entry Fee \$50

CLASS 191

LADIES HUNTER SIDE SADDLE CHAMPION AND RESERVE CHAMPION

Awarded to the two horses which have earned the most points in classes 188-190. In case of a tie, the horses will hack off to determine the Champion and/or Reserve Champion.

Trophy and Champion Ribbon; Reserve Champion Ribbon



Photo by Brenda Carpenter



US EQUESTRIAN SAFE SPORT STATEMENT

All USEF Life and Senior Active members, as well as participants who have regular contact with minor athletes, are required to comply with the U.S. Center for SafeSport training requirement to be eligible to participate in the competition. All participants must adhere to the U.S. Center for SafeSport Code, USEF Safe Sport Policy, and the Minor Athlete Abuse Prevention Policies. More information about these can be found at www.usef.org.

US EQUESTRIAN MEMBERSHIP STATEMENT

Life, senior active and junior active members shall be eligible to participate in all classes at Regular Competitions, Eventing Competitions at the Modified Level or above and Combined Driving Competitions, Dressage, Reining and Vaulting Competitions and Endurance Rides. A non-member may participate as a handler, rider, driver, owner, lessee or agent at Regular Competitions, Eventing Competitions, Dressage Competitions, Reining Competitions and Combined Driving Competitions upon payment of a Show Pass fee. Participants in the following classes are exempted from the Requirements of this rule: 1) leadline; 2) exhibitions; 3) games and races; 4) classes for 4-H members; 5) walk trot and academy classes (academy classes are classes limited to horses used regularly in a lesson program); 6) USDF introductory level tests, pas de deux and quadrille classes; and 7) assistant handlers in Dressage Sport Horse Breeding classes.

US EQUESTRIAN MOTORIZED VEHICLE STATEMENT

Minors who do not have a valid driver's license which allows them to operate a motorized vehicle in the state in which they reside will not be permitted to operate a motorized vehicle of any kind, including, but not limited to, golf carts, motorcycles, scooters, or farm utility vehicles, on the competition grounds of licensed competitions. Minors who have a valid temporary license may operate the above described motorized vehicles as long as they are accompanied by an adult with a valid driver's license. The parent/legal guardian or individual who signs the entry blank as a parent or guardian of a minor operating a motorized vehicle in violation of this rule are solely responsible for any damages, claims, losses or actions resulting from that operation. Violations of this rule will be cause for penalties against those responsible for the child committing the offense. Wheelchairs and other mobility assistance devices for individuals with disabilities are exempt from this rule.

The unsafe use of personal electronic transport devices, as determined by the competition officials and management in their sole discretion, that do not require a driver's license to operate, including but not limited to segways, hover boards, and single wheeled scooters is prohibited on competition grounds. Operating such devices in areas where people gather may be deemed "unsafe use" if there is a risk of harm to others. If the operator of the device is a minor, the parent/legal guardian or individual who signs the entry blank as a parent or guardian of a minor operating the device in violation of this rule is accountable and may be subject to penalties. Wheelchairs and other mobility assistance devices for individuals with disabilities are exempt from this rule.



Show Jumping Hall of Fame Jumper Classic Series

The Show Jumping Hall of Fame Jumper Classic Series is designed to give amateur-owner and junior riders an opportunity to compete at higher levels and serves as a proving ground for many riders who aspire to someday represent the United States in international competition.

With classes at approximately 100 horse shows across the country, the Series hosts separate junior and amateur-owner divisions in two Conferences—East and West.

Series standings are used to help determine junior and amateur-owner entries for the National Horse Show and the Las Vegas National Horse Show.

Series winners receive year-end awards, and the Series offers Year-End Championship Finals for junior and amateur-owner riders at the National Horse Show and the Las Vegas National Horse Show.

Any horse show offering a class that meets all the criteria set forth in the Series specifications and has prize money of at least \$1,000 is eligible to be part of the series.

The Show Jumping Hall of Fame Jumper Classic Series is sponsored by:



For more information, including complete Series specifications, please visit

www.ShowJumpingHallofFame.net

DONATIONS

I would like to support the Show Jumping Hall of Fame.

Enclosed, please find my check for:

☐ \$5,000 ☐ \$2,500 ☐ \$1,000 ☐ \$500 ☐ \$ Other

Name _____

Address _____ City _____ State _____ Zip _____

Phone _____ Email _____

Please mail check, payable to Show Jumping Hall of Fame, to SHF, c/o Classic Communications, 38 Mechanic Street, Suite 101, Foxboro, MA 02035

The Show Jumping Hall of Fame and Museum, Inc. is a 501(c)(3) nonprofit organization. All contributions are tax-deductible to the full extent of the law.

JUMPER DIVISION

Nominating Fee \$150 per horse.

Unless otherwise specified, horses tied for other than first place will be placed based on their time in the first round. The time allowed for all classes will be based on 350 meters per minute.

Exception: classes 243 & 246 will be based on 375 meters per minute.

\$27,500 1.40/1.45M JUNIOR JUMPER SECTION

**The Committee will limit the number of entries accepted in this section. See page 10.
No more than two horses per rider, as originally entered, will be accepted in each section.
(You may enter as many horses as you wish).**

**ENTRY FEE FOR CLASSES 201 - 203 IS \$1,000
INDIVIDUAL CLASSES MAY NOT BE ENTERED**

CLASS 201

\$3,750 1.40M JUNIOR JUMPER TIME FIRST ROUND

Table II, Sec. 1

CLASS 202

\$3,750 1.40M JUNIOR JUMPER TIME FIRST JUMP-OFF

Table II, Sec. 2(a)

CLASS 203

\$20,000 SHOW JUMPING HALL OF FAME 1.45M JUNIOR JUMPER CLASSIC

Dedicated to Kathy Kusner, Class of 1990.

Current standings and schedules for the SJHOF Classic Series are available through www.ryegate.com or www.showjumpinghalloffame.net. Table II, Sec. 2(a). All horses must be on the grounds 24 hours prior to the scheduled start of the class.

1st, Trophy and \$5,200; 2nd, \$3,600; 3rd, \$2,400; 4th, \$1,900; 5th, \$1,500; 6th, \$1350; 7th, \$1200; 8th, \$850; 9th, \$600; 10th, \$600; 11th, \$400; 12th, \$400

CLASS 204

1.40/1.45M JUNIOR JUMPER CHAMPIONSHIP

Awarded to the two horses having the highest number of points in this section. In case of a tie, the championship will be awarded to the competitor placing higher in class 203. Ribbons won in classes 201 & 202 to count; 10-6-4-2-1-1/2. Ribbons won in class 203 to count 15-9-6-3-2-1.

Trophy and Champion Ribbon; Reserve Champion Ribbon

CLASS 205

LEADING 1.40/1.45M JUNIOR JUMPER RIDER AWARD

Points will be awarded to the rider receiving the greatest number of points on one horse.

Points will be awarded in classes 201 & 202: 10-6-4-2-1-1/2.

Points will be awarded in class 203: 15-9-6-3-2-1.

Trophy and Champion Ribbon

CLASS 206

STYLE OF RIDING AWARD

To be awarded to the Junior Jumper rider who best exemplifies the American style of equitation, and the respectful, dignified, courteous and workmanlike manner of a true sportsman.

Trophy and Champion Ribbon

\$27,500 1.40/1.45M AMATEUR JUMPER SECTION

**The Committee will limit the number of entries accepted in this section. See page 10.
No more than two horses per rider, as originally entered, will be accepted in each section.
(You may enter as many horses as you wish).**

To be ridden by an Amateur as per (GR1306, GR1307, & JP118) who is no longer eligible to compete as a Junior Exhibitor.

**ENTRY FEE FOR CLASSES 211 - 213 IS \$1,000
INDIVIDUAL CLASSES MAY NOT BE ENTERED**

CLASS 211

\$3,750 1.40M AMATEUR JUMPER TIME FIRST JUMP-OFF

Table II, Sec. 2(b)

CLASS 212

\$3,750 1.40M AMATEUR JUMPER TIME FIRST ROUND

Table II, Sec. 1

CLASS 213

\$20,000 SHOW JUMPING HALL OF FAME 1.45M AMATEUR JUMPER CLASSIC

Dedicated to Johnny Bell, Class of 1998.

Current standings and schedules for the SJHOF Classic Series are available through www.ryegate.com or www.showjumpinghalloffame.net. Table II, Sec. 2(a). All horses must be on the grounds 24 hours prior to the scheduled start of the class.

1st, Trophy and \$5,200; 2nd, \$3,600; 3rd, \$2,400; 4th, \$1,900; 5th, \$1,500; 6th, \$1350; 7th, \$1200; 8th, \$850; 9th, \$600; 10th, \$600; 11th, \$400; 12th, \$400

CLASS 214

1.40/1.45M AMATEUR JUMPER CHAMPION AND RESERVE CHAMPION

Awarded to the two horses having the highest number of points in this section.

In case of tie, the championship will be awarded to the competitor placing higher in class 213.

Ribbons won in classes 211 & 212 to count: 10-6-4-2-1-1/2.

Ribbons won in class 213 to count: 15-9-6-3-2-1.

Trophy and Champion Ribbon; Reserve Champion Ribbon

CLASS 215 LEADING 1.40/1.45M AMATEUR JUMPER RIDER AWARD

Points will be awarded to the rider receiving the greatest number of points on one horse.

Points will be awarded in Classes 211 & 212: 10-6-4-2-1-1/2.

Points will be awarded in Class 213: 15-9-6-3-2-1.

Trophy and Champion Ribbon

\$13,000 1.10/1.15M JUNIOR JUMPER SECTION

The Committee will limit the number of entries accepted in this section. See page 10.

Horses will be accepted based on US Equestrian 1.10/1.15M Junior Jumper points earned at all shows including those won out of the owner's resident Zone, within the qualifying period of April 3, 2023 through April 1, 2024, using the best points earned at no more than 15 horse shows during this time period. 1.10m - 1.15m height will be used for qualifying. Only two horses per rider will be accepted. Zone 2 rules apply.

**ENTRY FEE FOR CLASSES 221 - 223 IS \$750
INDIVIDUAL CLASSES MAY NOT BE ENTERED**

CLASS 221

\$1,500 1.10M JUNIOR JUMPER TIME FIRST JUMP-OFF

Table II, Sec. 2(b)

CLASS 222

\$1,500 1.10M JUNIOR JUMPER TIME FIRST JUMP-OFF

Table II.1

CLASS 223

\$10,000 NAL/WIHS 1.15M JUNIOR JUMPER TIME FIRST JUMP-OFF

Table II, Sec. 2(a)

Member event of 2022 North American League and WIHS Championship

1st, \$2,200; 2nd, \$1,500; 3rd, \$1,100; 4th, \$950; 5th, \$850; 6th, \$800; 7th, \$700; 8th, \$700; 9th, \$600; 10th, \$600

CLASS 224

1.10/1.15M JUNIOR JUMPER CHAMPIONSHIP

Ribbons won in class 221 & 222 to count; 10-6-4-2-1-1/2.

Ribbons won in class 223 to count 15-9-6-3-2-1.

Trophy and Champion Ribbon; Reserve Champion Ribbon



Alexia Sica & Quickly Stated, 2023 Children's Jumper Champions

Photo: Kind Media LLC ©

\$13,000 1.10/1.15M AMATEUR JUMPER SECTION

The Committee will limit the number of entries accepted in this section. See page 10.

Horses will be accepted based on US Equestrian 1.10/1.15M Amateur Jumper points earned at all shows including those won out of the owner's resident Zone, within the qualifying period of April 3, 2023 through April 1, 2024. 1.10m - 1.15m height will be used for qualifying. Only two horses per rider will be accepted. Zone 2 rules apply.

**ENTRY FEE FOR CLASSES 231 - 233 IS \$750
INDIVIDUAL CLASSES MAY NOT BE ENTERED**

CLASS 231

\$1,500 1.10M AMATEUR JUMPER TIME FIRST JUMP-OFF

Table II, Sec. 2(b)

CLASS 232

\$1,500 1.10M AMATEUR JUMPER TIME FIRST ROUND

Table II, Sec. 1

CLASS 233

\$10,000 NAL/WIHS 1.15M AMATEUR JUMPER CLASSIC TIME FIRST JUMP-OFF

Table II, Sec. 2(a). Member event of the 2022 North American League and WIHS Championship.

1st, \$2,200; 2nd, \$1,500; 3rd, \$1,100; 4th, \$950; 5th, \$850; 6th, \$800;

7th, \$700; 8th, \$700; 9th, \$600; 10th, \$600

CLASS 234

1.10/1.15M ADULT AMATEUR JUMPER CHAMPIONSHIP

Ribbons won in class 231 & 232 to count; 10-6-4-2-1-1/2.

Ribbons won in class 233 to count 15-9-6-3-2-1.

Trophy and Champion Ribbon; Reserve Champion Ribbon

**Prize Money purses will be distributed as follows in the Jumper division
unless stated otherwise:**

PURSE	1st	2nd	3rd	4th	5th	6th	7th	8th
\$750	225	135	105	80	65	55	45	40
1,500	410	270	220	170	140	110	90	90
3,750	1,000	700	575	425	375	275	225	175
10,000	2,800	2,000	1,200	1,000	900	800	700	600
20,000	5,600	4,000	2,400	2,000	1,800	1,600	1,400	1,200



\$487,200 DEVON OPEN JUMPER SECTION

The Committee will limit the number of riders accepted in this section to 32. Declarations must be made in the Horse Show office no later than 9:00 AM on the day of the competition unless otherwise noted.

FEI Horse Inspection

Monday, May 27 at 5:00 pm. Location to be announced.

CLASS 240

\$38,700 JET RUN DEVON WELCOME STAKE - TIME FIRST JUMP-OFF

FEI 238.2.1a. Fences 1.50m. Riders are limited to two horses.

1st \$12,771; 2nd, \$7,740; 3rd, \$5,805; 4th, \$3,870; 5th, \$2,322; 6th, \$1,742; 7th, \$1161; 8th, \$967; 9th, \$774; 10th, \$774; 11th, \$387; 12th, \$387

CLASS 242

\$38,700 MAIN LINE CHALLENGE

FEI 274.2.5. Fences 1.45m. Riders are limited to two horses.

1st \$12,771; 2nd, \$7,740; 3rd, \$5,805; 4th, \$3,870; 5th, \$2,322; 6th, \$1,742; 7th, \$1161; 8th, \$967; 9th, \$774; 10th, \$774; 11th, \$387; 12th, \$387

CLASS 243

\$226,000 SAPPHIRE GRAND PRIX OF DEVON Celebrating its 42nd Year - TIME FIRST JUMP-OFF

FEI 238.2.2 GP. Fences 1.45m to 1.60m, speed 375 m/m.

Bonus Points. Riders are limited to one horse.

1st, Trophy and \$74,580; 2nd, \$45,200; 3rd, \$33,900; 4th, \$22,600; 5th, \$13,560; 6th, \$10,170; 7th, \$6,780; 8th, \$5,650; 9th, \$4,520; 10th, \$4,520; 11th, \$2,260; 12th, \$2,260

CLASS 244

RICHARD E. McDEVITT STYLE AWARD

Awarded to the rider who exemplifies the best style of riding during the Grand Prix of Devon.

CLASS 245

\$38,700 DEVON SPEED DERBY

Dedicated to Frank Chapot

Table C - Fences to 1.45m in height - 4 seconds added for each knockdown

Riders are limited to two horses.

1st \$12,771; 2nd, \$7,740; 3rd, \$5,805; 4th, \$3,870; 5th, \$2,322; 6th, \$1,742; 7th, \$1161; 8th, \$967; 9th, \$774; 10th, \$774; 11th, \$387; 12th, \$387

CLASS 246

\$145,100 IDLE DICE OPEN JUMPER STAKE - TIME FIRST JUMP-OFF

FEI 238.2.2. Fences to 1.45m to 1.55m, speed 375 m/m.

Bonus Points. Riders are limited to two horses.

1st, Trophy and \$47,883; 2nd, \$29,020; 3rd \$21,765; 4th, \$14,510; 5th, \$8,706; 6th, \$6,530; 7th, \$4,353; 8th, \$3,627; 9th, \$2,902; 10th, \$2,902; 11th, \$1,451; 12th, \$1,451

CLASS 247

OPEN JUMPER CHAMPION AND RESERVE CHAMPION

Awarded to the horse with the greatest number of points in this section. Tie for Champion will remain tied. Ribbons won in Classes 240, 242 and 245 to count; 10-6-4-2-1-1/2. Ribbons won in class 246 to count 15-9-6-3-2-1. Ribbons won in class 243 (Grand Prix) to count 25-18-12-6-4-2.

Trophy and Champion Ribbon; Reserve Champion Ribbon

CLASS 248

LEADING OPEN JUMPER RIDER

Awarded to the rider with the greatest number of points in this section. Ties for Leading Rider will remain tied and the award will be made equally. Ribbons won in classes 240, 242 and 245 to count; 10-6-4-2-1-1/2. Ribbons won in class 246 to count 15-9-6-3-2-1. Ribbons won in class 243 (Grand Prix) to count 25-18-12-6-4-2. If a rider rides more than one horse in a class, only the points on their top placed horse will count.

Trophy

CLASS 249

LEADING LADY RIDER

Awarded to the rider with the greatest number of points in this section. Ties for Leading Rider will remain tied and the award will be made equally. Ribbons won in classes 240, 242 and 245 to count; 10-6-4-2-1-1/2. Ribbons won in class 246 to count 15-9-6-3-2-1. Ribbons won in class 243 (Grand Prix) to count 25-18-12-6-4-2. If a rider rides more than one horse in a class, only the points on their top placed horse will count.

Trophy



Ashlee Bond, 2023 Leading Lady Rider

Photo: © Kind Media LLC



**ALL CLASSES IN THIS SECTION COUNT FOR THE
LONGINES WORLD RANKING LIST**



**Please visit ryegate.com/uset.php
Upcoming Classes to determine which classes will be included in the
Rolex Computer Ranking List.**

USEF Competition Name:

DEVON HORSE SHOW

USEF #: 201

Competition Division(s) and Rating(s):

Rated "Premier" in Green & High Performance Conformation Hunter, High Performance Working Hunter, Junior, Pony, Amateur-Owner, Green Working Hunter 3'6", and Green Working Hunter 3'9";

Rated "Regional" in: 1.10/1.15m Amateur Jumper, 1.10/1.15m Junior Jumper, Ladies Side Saddle, Hunter Breeding and Pony Hunter Breeding.

Jumper Rating: USEF 6* & FEI CSI 4*

USEF Competition Name:

DEVON ARENA EVENTING

USEF #: 338654



LEARN ABOUT MAAP POLICIES



Safe Sport Training



Local Travel



One-On-One Interactions



Social Media & Electronic Communications



Read about these & more at usef.org/MAAPP

REPORT MAAP POLICY VIOLATIONS



usef.org/safe-sport/reporting

859-225-6915 or Text Anonymously 855-682-8733



\$6,000 YOUNG JUMPER SECTION

The Committee reserves the right to restrict entries for the Young Jumpers to 15 per age group and to accept post-entries as necessary.

No nomination fee. No qualifying fee. All entry fees to accompany entry.

CLASS 261

\$750 FIVE YEAR OLD YOUNG JUMPER

Table II. Fences 1.10m - 1.15m.

Entry Fee \$50

CLASS 262

\$750 FIVE YEAR OLD YOUNG JUMPER

Table II. Fences 1.10m - 1.15m.

East Coast Young Jumper Qualifier

Entry Fee \$50

CLASS 263

\$750 SIX YEAR OLD YOUNG JUMPER TIME FIRST JUMP-OFF

Table II, Sec. 2(b). Fences 1.20m - 1.25m.

Entry Fee \$50

CLASS 264

\$750 SIX YEAR OLD YOUNG JUMPER TIME FIRST JUMP-OFF

Table II, Sec. 2(b). Fences 1.20m - 1.25m.

East Coast Young Jumper Qualifier

Entry Fee \$50

CLASS 265

\$1,500 SEVEN YEAR OLD YOUNG JUMPER TIME FIRST JUMP-OFF

Table II, Sec. 2(b). Fences 1.30m - 1.35m.

Entry Fee \$100

CLASS 266

\$1,500 SEVEN YEAR OLD YOUNG JUMPER TIME FIRST JUMP-OFF

Table II, Sec. 2(b). Fences 1.30m - 1.35m.

East Coast Young Jumper Qualifier

Entry Fee \$100



Josselyn Mersereau & Greg, 2023 7 Year Old Jumper East Coast

Photo: © TKind Media LLC

HUNTER BREEDING SECTION

Entry Fee: \$75 per class

Trophy & 8 ribbons in all classes

Any scratch from this section is fully subject to the rules and procedures of the horse show (see page 13 of this prize list). A scratched entry is no longer eligible to receive exhibitor parking or exhibitor wristbands. **One handler per entry/one entry per handler.** All breeding classes to be judged on conformation, quality, substance and suitability to become or, in the case of sires and dams, apparent ability to produce or beget hunters. Transmissible unsoundness only to be considered in cases of sires and dams or prospective sires or dams. Handler changes must be done in the horse Show office prior to the start of the class. Horses to be moved on the line.

All sire and dam info is supplied by US Equestrian data.

Please verify your horse/pony recording has this data listed.

See pg. 18 for information regarding stabling for Hunter Breeding.

YEARLING, THOROUGHBRED/UNREGISTERED THOROUGHBRED SUITABLE TO BECOME A HUNTER

CLASS 271 - COLTS/GELDINGS

CLASS 272 - FILLIES

YEARLING, OTHER THAN THOROUGHBRED SUITABLE TO BECOME A HUNTER

CLASS 273 - COLTS/GELDINGS

CLASS 274 - FILLIES

TWO YEAR OLD, THOROUGHBRED/UNREGISTERED THOROUGHBRED SUITABLE TO BECOME A HUNTER

CLASS 275 - COLTS/GELDINGS

CLASS 276 - FILLIES

TWO YEAR OLD, OTHER THAN THOROUGHBRED SUITABLE TO BECOME HUNTER

CLASS 277 - COLTS/GELDINGS

CLASS 278 - FILLIES

THREE YEAR OLD THOROUGHBRED/UNREGISTERED THOROUGHBRED SUITABLE TO BECOME HUNTER

CLASS 279 - COMBINED STALLIONS/GELDINGS & MARES

BEST THOROUGHBRED

CLASS 279A - open to 1st place winners from classes 271, 272, 275, 276, 279

THREE YEAR OLD, OTHER THAN THOROUGHBRED SUITABLE TO BECOME HUNTER

CLASS 280 - STALLIONS/GELDINGS

CLASS 281 - MARES

MARES FOUR YEAR OLDS OR OLDER, SUITABLE TO PRODUCE HUNTERS

CLASS 282

PENNSYLVANIA-BRED BREEDING SECTION

Open to Thoroughbred or Non-Thoroughbred horses bred in Pennsylvania.

“Pennsylvania-bred” is defined as an animal that has been foaled in Pennsylvania or conceived by a stallion standing in Pennsylvania.

Entry Fee: \$75 per class

Trophy & 8 ribbons in each class

PENNSYLVANIA-BRED YEARLING

CLASS 283 - COLTS/GELDINGS

CLASS 284 - FILLIES

PENNSYLVANIA-BRED TWO YEAR OLD

CLASS 285 - COLTS/GELDINGS

CLASS 286 - FILLIES

PENNSYLVANIA-BRED THREE YEAR OLD

CLASS 287 - COMBINED COLTS/GELDINGS & FILLIES

CLASS 288

BEST YEARLING

Open to 1st place winners of classes 271, 272, 273, 274, 283 & 284.

Trophy and Champion Ribbon; Reserve Champion Ribbon

CLASS 289

BEST PENNSYLVANIA-BRED HORSE

Open to 1st and 2nd place winners in classes 283, 284, 285, 286, & 287.

Trophy and Champion Ribbon; Reserve Champion Ribbon

CLASS 290

BEST YOUNG HORSE

Open to 1st and 2nd place winners in classes 271 - 281.

Trophy and Champion Ribbon; Reserve Champion Ribbon

CLASS 291

LEADING HANDLER AWARD

Presented to the handler who accrues the most points based on ribbons won in classes 271 through 282. Point values 5-3-2-1.

No Entry Fee

Trophy and Champion Ribbon

CLASS 292

LEADING PA HANDLER AWARD

Presented to the handler who accrues the most points based on ribbons won in classes 283 through 287. Point values 5-3-2-1.

No Entry Fee

Trophy and Champion Ribbon

CLASS 293

AMATEUR/JUNIOR HANDLER CLASS

Horse to be shown on the line by an Amateur or Junior. To be judged on presentation of the animal to the judge, neatness and appearance of the handler, and the overall condition of the animal. Conformation will not be a determining factor. This class is intended for the sole purpose of stimulation of participation of Amateurs and Juniors in the breeding division and does not limit that person to this class. Points to count toward PHSA year-end awards. Points not to count for US Equestrian Horse of the Year Awards, Best Young Horse Class or Leading Handler Award.

Entry Fee: \$75

Trophy and Eight Ribbons

CLASS 294

YOUNG HUNTER UNDER SADDLE - PHSA REGISTERED

Five year olds and under suitable to become hunters. Open to horses who are registered with the PHSA and whose owner and rider are PHSA members. PHSA membership forms are available at the Horse Show office or online at www.pennhsa.org. To be judged at walk, trot, canter, but not to jump.

Conformation and soundness 50%; performance, manners and way of going 50%. Horses must be stripped for conformation.

Entry Fee \$75

Trophy and Eight Ribbons

CLASS 295

YOUNG HUNTER UNDER SADDLE - Open

Five year olds and under suitable to become hunters. Open to horses not registered with PHSA. Horses entered in Class 294 are not eligible to compete in this class. To be judged at walk, trot, canter, but not to jump. Conformation and soundness 50%; performance, manners and way of going 50%. Horses must be stripped for conformation.

Entry Fee \$75

Eight Ribbons

HUNTER PONY BREEDING SECTION

Entry Fee: \$75 per class

To be shown in hand. All classes to be judged on conformation, type, way of moving and soundness.

All sire and dam info is supplied by US Equestrian data.

Please verify your horse/pony recording has this data listed.

See page 18 for more information regarding stabling for Pony Hunter Breeding.

HUNTER PONY - FOALS

301 - COMBINED COLTS/GELDINGS & FILLIES

HUNTER PONY - YEARLINGS

302 - COLTS AND GELDINGS

303 - FILLIES

HUNTER PONY - TWO YEAR OLDS

304 - COLTS AND GELDINGS

305 - FILLIES

HUNTER PONY - THREE YEAR OLDS

306 - STALLIONS AND GELDINGS

307 - MARES



Pennsylvania Horse Shows Association

**The Devon Horse Show is a regular member of the
Pennsylvania Horse Shows Association**

PHSA classification and High Score Award points will be awarded on the same basis in the various divisions as specified by US Equestrian. Individual members are entitled to the annual PHSA High Score Awards only after they have paid their dues and their horses have been registered with the PHSA.

Join online at: pennhsa.org Email: contactus@pennhsa.org

Contact: Nina McMenamin • PO Box 183 Chester Springs, PA 19425 • (610) 812-3920

CLASS 308**HUNTER PONY - PRODUCE OF DAM**

Only one back number to be used per group of entries. See Horse Show office for procedures.

Multiple Sets of Six Ribbons

CLASS 309**HUNTER PONY - GET OF SIRE**

Only one back number to be used per group of entries. See Horse Show office for procedures.

Multiple Sets of Six Ribbons

HUNTER PONY - CHAMPION AND RESERVE

Open to 1st and 2nd place winners in classes 302-307. No entry fee.

310 - COLT, STALLION OR GELDING

311 - FILLY OR MARE

Trophy and Champion Ribbon; Reserve Champion Ribbon

CLASS 312**BEST YOUNG PONY**

Open to 1st and 2nd place winners in classes 310 & 311. No entry fee.

Trophy and Champion Ribbon; Reserve Champion Ribbon

CLASS 313**PHBHA TROPHY**

Awarded to the highest scoring PA Bred pony.

Trophy and Champion Ribbon; Reserve Champion Ribbon

CLASS 314**LEADING PONY BREEDING HANDLER AWARD**

Presented to the handler who accrues the most points based on ribbons won in classes 302 through 307. Point values 5, 3, 2, 1.

No Entry Fee

Trophy and Champion Ribbon

CLASS 315**YOUNG PONY HUNTER UNDER SADDLE - PHSA REGISTERED**

Five year olds and under ponies suitable to become hunters. Open to ponies who are registered with the PHSA and whose owners & riders must be PHSA members. PHSA membership forms are available at the Show office or online at www.pennhsa.org. To be judged at walk, trot, canter and soundness, not to jump. Conformation 50%; performance, manners and way of going 50%. Ponies must be stripped for conformation.

Entry Fee \$75

Trophy and Eight Ribbons

Prize Money purses will be distributed as follows in the Saddlebred, Hackney Horse and Pony and Roadster Horse and Pony divisions:

PURSE	1st	2nd	3rd	4th	5th	6th	7th	8th
200	90	50	25	15	10	10	n/a	n/a
250	100	60	35	25	15	15	n/a	n/a
350	110	70	50	30	25	25	20	20
500	150	90	70	55	45	35	30	25
1,000	300	180	140	110	90	70	60	50
1,500	450	270	210	165	135	105	90	75
3,000	850	550	475	325	275	200	175	150
5,000	1,400	1,000	600	500	450	400	350	300

AMERICAN SADDLEBRED HORSE DIVISION

Three Gaited, Five Gaited, Fine Harness and American Saddlebred Pleasure horses of this division must be registered with the American Saddlebred Horse Association or the Canadian Livestock Records Corporation, and must be entered under their full registered names with registration numbers under the names of the owner(s) of record with the ASHA or CLRC, except as noted in Article SB101. **A copy of the registration papers showing proof of ownership must be submitted with the entry blank.** If a horse has been injured after the close of entries, the substitution of another horse will be allowed. Exhibitors must immediately notify the Horse Show office of the change in entry.

THE WALTER MOONEY AMERICAN SADDLEBRED THREE GAITED SECTION

CLASS 351

\$500 THREE GAITED SADDLEBRED - JUNIOR EXHIBITOR

Entry Fee \$50

CLASS 352

\$500 THREE GAITED SADDLEBRED - LADIES

Entry Fee \$50

CLASS 353

\$500 THREE GAITED SADDLEBRED - AMATEUR

Entry Fee \$50

CLASS 354

\$5,000 THREE GAITED SADDLEBRED STAKE - AMATEUR TO RIDE

To be eligible, horses must have been entered, shown and judged in class 353;

Amateur Lady may qualify out of class 352.

Entry Fee \$200

CLASS 356

\$500 THREE GAITED SADDLEBRED - JUNIOR AND/OR NOVICE

Entry Fee \$50

CLASS 357

\$500 THREE GAITED SADDLEBRED - OPEN

Entry Fee \$50

CLASS 358

\$5,000 THREE GAITED SADDLEBRED STAKE

To be eligible, horses must have been entered, shown and judged in any other class in this section.

Entry Fee \$200

AMERICAN SADDLEBRED FIVE GAITED SECTION

CLASS 360

\$200 FIVE GAITED SADDLEBRED - JUNIOR EXHIBITOR

Entry Fee \$30

CLASS 361

\$200 FIVE GAITED SADDLEBRED - LADY TO RIDE

Entry Fee \$30

CLASS 363

\$200 FIVE GAITED SADDLEBRED - AMATEUR

Entry Fee \$30

CLASS 364

\$3,000 FIVE GAITED SADDLEBRED STAKE - AMATEUR TO RIDE

To be eligible, horses must have been shown and judged in classes 360, 361 or 363.

Entry Fee \$150

CLASS 365

\$200 FIVE GAITED SADDLEBRED - JUNIOR and/or NOVICE

Entry Fee \$30

CLASS 367

\$200 FIVE GAITED SADDLEBRED - OPEN

Entry Fee \$30

CLASS 368

\$3,000 FIVE GAITED SADDLEBRED STAKE

Horses do not have to qualify in order to compete in this class.

Entry Fee \$150

AMERICAN SADDLEBRED FINE HARNESS SECTION

(Shown in an appropriate four-wheeled vehicle)

CLASS 373

\$200 FINE HARNESS HORSE - AMATEUR

Entry Fee \$30

CLASS 374

\$200 FINE HARNESS HORSE - OPEN

Entry Fee \$30

CLASS 375

\$1,500 FINE HARNESS HORSE CHAMPIONSHIP

To be eligible, horses must have been entered, shown and judged in any other class in this section.

Entry Fee \$100

CLASS 376

\$1,000 FINE HARNESS HORSE CHAMPIONSHIP - AMATEUR

To be eligible, horses must have been entered, shown and judged in class 373.

Entry Fee \$75

SHOW PLEASURE HORSE SECTION

CLASS 381

\$200 SHOW PLEASURE DRIVING HORSE

Entry Fee \$30

CLASS 382

\$500 SHOW PLEASURE DRIVING HORSE CHAMPIONSHIP

To be eligible, horses must have been entered, shown and judged in class 381.

Entry Fee \$40

CLASS 383

\$200 THREE GAITED ENGLISH SHOW PLEASURE HORSE - JR. EXHIBITOR

Entry Fee \$30

CLASS 384

\$500 THREE GAITED ENGLISH SHOW PLEASURE CHAMPIONSHIP -JR. EXHIBITOR

To be eligible, horses must have entered, shown and judged in class 383, 386, or 390 if ridden by a Jr. Exhibitor.

Entry Fee \$40

CLASS 385

\$200 THREE GAITED ENGLISH SHOW PLEASURE HORSE - ADULT

Entry Fee \$30

CLASS 390

\$200 THREE GAITED ENGLISH SHOW PLEASURE - LOCAL

Open to horses ridden by a resident of NY, NJ, MD, DE or PA. Class qualifies for class 387.

Entry Fee \$30

CLASS 386

\$200 LIMIT THREE GAITED ENGLISH SHOW PLEASURE

Entry Fee \$30

CLASS 387

\$1,500 THREE GAITED ENGLISH SHOW PLEASURE HORSE CHAMPIONSHIP

To be eligible horses must have been entered, shown and judged in classes 383, 385, 386 or 390.

Entry Fee \$100

CLASS 388

\$200 FIVE GAITED ENGLISH SHOW PLEASURE HORSE

Entry Fee \$30

CLASS 389

\$500 FIVE GAITED ENGLISH SHOW PLEASURE HORSE CHAMPIONSHIP

To be eligible, horses must have been entered, shown and judged in class 388.

Entry Fee \$40

WESTERN COUNTRY PLEASURE HORSE SECTION

CLASS 391

\$200 WESTERN COUNTRY PLEASURE HORSE

Entry Fee \$30

CLASS 392

\$500 WESTERN COUNTRY PLEASURE HORSE CHAMPIONSHIP

To be eligible, horses must have been entered, shown and judged in class 391.

Entry Fee \$40

THREE GAITED COUNTRY PLEASURE HORSE SECTION

CLASS 393 - Entry Fee \$30

\$200 THREE GAITED COUNTRY PLEASURE HORSE - JR. EXHIBITOR

CLASS 394 - Entry Fee \$30

\$200 THREE GAITED COUNTRY PLEASURE HORSE - ADULT RIDER

CLASS 400 - Entry Fee \$30

\$200 THREE GAITED COUNTRY PLEASURE - LOCAL

Open to horses ridden by a resident of NY, NJ, MD, DE or PA. Qualifies for class 395.

CLASS 442 -Entry Fee \$35

\$350 THREE GAITED COUNTRY PLEASURE CHAMPIONSHIP- JR. EXHIBITOR

To be eligible, horses must have been entered, shown and judged in class 393.

CLASS 395 - Entry Fee \$40

\$500 THREE GAITED COUNTRY PLEASURE HORSE CHAMPIONSHIP

To be eligible, horses must have been entered, shown and judged in class 393, 394 or 400.

COUNTRY PLEASURE DRIVING HORSE SECTION

CLASS 396 - Entry Fee \$30

\$200 COUNTRY PLEASURE DRIVING HORSE

CLASS 397 - Entry Fee \$35

\$350 COUNTRY PLEASURE DRIVING HORSE CHAMPIONSHIP

To be eligible, horses must have been entered, shown and judged in class 396.

ASB HUNTER COUNTRY PLEASURE HORSE SECTION

CLASS 398 - Entry Fee \$30

\$200 ASB HUNTER COUNTRY PLEASURE HORSE

CLASS 399 - Entry Fee \$35

\$350 ASB HUNTER COUNTRY PLEASURE HORSE CHAMPIONSHIP

To be eligible, horses must have been entered, shown and judged in class 398.



*CH Attache's Chocolate Thunder
& Rachel St. Andre*

*2023 Country Pleasure Driving
Champions*

Photo: Doug Shiflet Photography ©

AMERICAN SADDLEBRED PARK & PARK PLEASURE

To be shown with a full mane and tail.

CLASS 481

\$200 THREE GAITED PARK HORSE - JR. EXHIBITOR

Entry Fee \$30

CLASS 401

\$200 THREE GAITED PARK HORSE - AMATEUR

Entry Fee \$30

CLASS 402

\$500 OPEN THREE GAITED PARK HORSE STAKE - JUNIOR / AMATEUR

To be eligible, horses must have been entered, shown and judged in class 401 or 481.

Entry Fee \$40

CLASS 403

\$200 THREE GAITED PARK HORSE - OPEN

Entry Fee \$30

CLASS 404

\$1,000 OPEN THREE GAITED PARK HORSE STAKE

To be eligible, horses must have been entered, shown and judged in class 403.

Entry Fee \$50

CLASS 405

\$200 PARK PLEASURE - JUNIOR

Entry Fee \$30

CLASS 406

\$200 PARK PLEASURE - OPEN

Entry Fee \$30

CLASS 407

\$500 PARK PLEASURE STAKE

To be eligible, horses must have been entered, shown and judged in classes 405 & 406.

Entry Fee \$40

ENGLISH PLEASURE SADDLE SEAT

CLASS 408

\$200 ENGLISH PLEASURE SADDLE SEAT - OPEN

Entry Fee \$30

CLASS 409

\$200 ENGLISH PLEASURE SADDLE SEAT - LADIES

Entry Fee \$30

CLASS 410

\$500 ENGLISH PLEASURE SADDLE SEAT - CHAMPIONSHIP

To be eligible, horses must have been entered, shown and judged in classes 408 & 409.

Entry Fee \$40

ENGLISH PLEASURE DRIVING DIVISION

Open to Ponies & Horses

CLASS 445

\$200 ENGLISH PLEASURE DRIVING - OPEN

Ponies and horses.

Entry Fee \$30

CLASS 446

\$500 ENGLISH PLEASURE DRIVING - OPEN CHAMPIONSHIP

Ponies and horses. To be eligible, horses and ponies must have been entered, shown, and judged in class 445.

Entry Fee \$40

ENGLISH PLEASURE HUNTER SEAT

CLASS 447

\$200 ENGLISH PLEASURE HUNTER SEAT - OPEN

Entry Fee \$30

CLASS 448

\$500 ENGLISH PLEASURE HUNTER SEAT - OPEN CHAMPIONSHIP

To be eligible, horses and ponies must have been entered, shown, and judged in class 447.

Entry Fee \$40

OPEN FINE HARNESS SECTION

Shown in an appropriate four wheeled vehicle.

CLASS 377

\$200 OPEN FINE HARNESS

Entry Fee \$30

CLASS 378

\$500 OPEN FINE HARNESS CHAMPIONSHIP

To be eligible, horses must have been entered, shown or judged in class 377.

Entry Fee \$40

HACKNEY DIVISION

HACKNEY HORSE SECTION

Entries must be registered with the American or Canadian Hackney Horse Societies and must be entered under their full registered name by owner of record.

CLASS 411

\$200 HACKNEY HORSE - OPEN

Entry Fee \$30

CLASS 412

\$1,500 HACKNEY HORSE CHAMPIONSHIP

To be eligible, horses must have been entered, shown and judged in class 411.

Entry Fee \$100

HACKNEY PONY SECTION

Entries must be registered with the American or Canadian Hackney Horse Society and must be entered under their full registered name by owner of record.

CLASS 413 - Entry Fee \$30

\$200 HACKNEY PONY - AMATEUR TO DRIVE

CLASS 414 - Entry Fee \$30

\$200 HACKNEY PONY - OPEN

CLASS 415 - Entry Fee \$30

\$200 HACKNEY PONY - LIMIT

CLASS 416 - Entry Fee \$100

\$1,500 HACKNEY PONY CHAMPIONSHIP

To be eligible, ponies must have been entered, shown and been judged in any other single performance class in this section with the exception of #418.

CLASS 417 - Entry Fee \$100

\$1,500 HACKNEY PONY CHAMPIONSHIP - AMATEUR

To be eligible, ponies must have been entered, shown and been judged in class 413.

CLASS 418 - Entry Fee \$30

\$200 HACKNEY PONY TO A GIG

SHOW PLEASURE DRIVING SECTION

CLASS 421 - Entry Fee \$30

\$200 HACKNEY/HARNESS PONY PLEASURE DRIVING

CLASS 423 - Entry Fee \$35

\$350 HACKNEY/HARNESS PONY PLEASURE DRIVING CHAMPIONSHIP

To be eligible, ponies must have been entered, shown and judged in class 421.

HARNESS PONY SECTION

No pony in the Hackney/Harness Pony section may be shown in harness in the Hackney section.

All entries must possess a current measurement card or form issued by US Equestrian.

Not exceeding 12.2 hands. To be shown in harness.

CLASS 424 - Entry Fee \$30

\$200 HACKNEY/HARNESS PONY - AMATEUR TO DRIVE

CLASS 425 - Entry Fee \$30

\$200 HACKNEY/HARNESS PONY - OPEN

CLASS 426 - Entry Fee \$30

\$200 HACKNEY/HARNESS PONY - LIMIT

CLASS 427 - Entry Fee \$100

\$1,500 HACKNEY/HARNESS PONY CHAMPIONSHIP

To be eligible, ponies must have been entered, shown and judged in any other single performance class in this section.

CLASS 428 - Entry Fee \$100

\$1,500 HACKNEY/HARNESS PONY CHAMPIONSHIP - AMATEUR TO DRIVE

To be eligible, ponies must have been entered, shown and judged in class 424.

ROADSTER DIVISION

ROADSTER HORSE SECTION

The Roadster must be a Standardbred or of Standardbred type.

Horses shall be serviceably sound and shown without artificial appliances except boots and an inconspicuously applied tail switch or brace.

CLASS 431 - Entry Fee \$30

\$250 ROADSTER HORSE - AMATEUR

CLASS 432 - Entry Fee \$30

\$250 SINGLE ROADSTER - OPEN

CLASS 433

\$500 SINGLE ROADSTER CHAMPIONSHIP

To be eligible, horse must have been entered, shown and judged in any other class in this section.

Entry Fee \$40

ROADSTER PONY SECTION

Ponies, any breed, must not exceed 52" in height. Ponies may not be shown unless the owner possesses a current measurement card or valid measurement form issued by US Equestrian.

CLASS 434 - Entry Fee \$30

\$250 SINGLE ROADSTER PONY - AMATEUR TO DRIVE

CLASS 435 - Entry Fee \$30

\$200 SINGLE ROADSTER PONY - LIMIT

CLASS 436 - Entry Fee \$30

\$250 SINGLE ROADSTER PONY - OPEN

CLASS 437

\$500 SINGLE ROADSTER PONY CHAMPIONSHIP

To be eligible, ponies must have been entered, shown and judged in any other class in this section.

Entry Fee \$40

CLASS 438

\$500 SINGLE ROADSTER PONY CHAMPIONSHIP - AMATEUR TO DRIVE

To be eligible, ponies must have been entered, shown and judged in class 434 or 435.

Entry Fee \$40

CLASS 439

\$250 ROADSTER PONY (54 INCHES AND UNDER) - UNDER SADDLE

Entry Fee \$30

CLASS 440

\$500 ROADSTER PONY (54 INCHES AND UNDER) - UNDER SADDLE CHAMPIONSHIP

To be eligible, ponies must have been entered, shown and judged in class 439.

Entry Fee \$40

COACHING DIVISION

In honor of Robert A. Weaver and John M. Seabrook

FRIDAY
6/1/2024

CARRIAGE AFTER HOURS PARTY
9PM - CLOSE
HOSPITALITY ROOM

ENTRIES CLOSE APRIL 22, 2024

From the applicants, invitations will be issued after the close of entries.

Entries must be driven to an authentic Road Coach or Park Drag. Open to horses and ponies.
US Equestrian Opportunity Class Status. Horses are exempt from the Federation fee, including the Equine Drugs and Medication fee. However, under US Equestrian rules, horses entered only in these classes are still subject to and must comply with the Drugs and Medication rules and are subject to drug testing. Devon reserves the right to limit entries in this division at management's discretion.

Hitches will be inspected for cleanliness of animals, harness, and vehicle and general appearance of turnout prior to the class and may be rejected from competition at the discretion of the judge. Entries will be asked to halt and stand quietly. Entries will be lined up side by side facing the ringmaster. A groom is permitted at the horse's head but should not hold the animal.

The following rules apply to all entries in this division:

1. Coaches must be neat and painted properly.
2. Appropriate harness must be used, including the traditional three wooden lead bars.
3. Whips must be carried in all classes by the driver.
4. The leaders may not be tied together. Reins must be held in one hand, the other hand being available to assist as required.
5. Appearance and cleanliness of harness, horses and vehicle as well as general appearance of the whole to count.
6. Entries are requested to be tacked up in the stable area forty-five minutes before the scheduled time of judging.
7. Groom apparel: groom livery to be appropriate to the vehicle.

Park Drag: Two grooms in either formal or working livery, which must be neat and of the same style.

Road Coach: Must have guard and groom in proper livery.

CLASS 451

FOUR-IN-HAND, AUTHENTIC ROAD COACH OR PARK DRAG

APPOINTMENTS

To be judged on performance and presentation with an emphasis on appointments.

No Entry Fee

Trophy and Six Ribbons

CLASS 452

FOUR-IN-HAND, AUTHENTIC ROAD COACH OR PARK DRAG

SUITABLE FOR PLEASURE

To be driven in the ring at an even pace, stand quietly and start off mannerly. To be judged on manners, quality, and performance. Competitors may be asked to work individually.

No Entry Fee

Trophy and Six Ribbons

CLASS 453

FOUR-IN-HAND, AUTHENTIC ROAD COACH OR PARK DRAG

TIMED OBSTACLE

Entries will be judged over a course in the ring, consisting of approx. 5 to 8 markers suitably located, to be adjusted according to the width of the vehicle competing, placed 20" wider than the wheel track. Penalties are converted into seconds and added on for the final score. Fastest time to be the winner.

No Entry Fee

Trophy and Six Ribbons

CLASS 454

FOUR-IN-HAND, AUTHENTIC ROAD COACH OR PARK DRAG

PERFORMANCE

To be judged on performance, manners, general appearance, presentation, and condition of the turnout.

Appointments will not be taken into consideration.

No Entry Fee

Trophy and Six Ribbons

CLASS 455

FOUR-IN-HAND, AUTHENTIC ROAD COACH OR PARK DRAG

TIMED OBSTACLE

To be judged over a course consisting of approximately 10 markers suitably located, to be adjusted according to the width of the vehicle competing, placed 20" wider than the wheel track. Placings will be determined on a low fault basis. Time will decide ties.

No Entry Fee

Trophy and Six Ribbons

Penalties	Class 453	Class 455
Exceeding time allowed (every commenced second)	0.5 seconds	1 fault
Dislodging a ball or knocking over an obstacle	10 seconds	4 faults
Knocking over a start or finishing marker	10 seconds	4 faults
First disobedience or groom dismounting anywhere on course	10 seconds	3 faults
Second disobedience or groom dismounting anywhere on course	20 seconds	6 faults
Third disobedience or groom dismounting anywhere on course	Elimination	Elimination
Going off course	Elimination	Elimination
Failing to pass through the start or finishing flag	Elimination	Elimination
Failure to carry whip	Elimination	Elimination
Three or more horses cantering at the same time for more than 10 seconds:		
First time	10 seconds	10 faults
Second time	10 seconds	10 faults
Third time	Elimination	Elimination

CLASS 456

COACHING CHAMPIONSHIP

To be awarded to the coach having won the greatest number of points in classes 451, 452, 453, 454 and 455.

In order to earn points in classes 453 and 455, an exhibitor must have participated in 2 of the 3 classes also offered in the section (451, 452 and 454). If the whip of record is changed for any class from the one listed on the entry form, those points will not accumulate towards the Championship. Points will be awarded for all ribbons won 5-3-2-1-1/2.

Trophy and Champion Ribbon; Reserve Champion Ribbon

CLASSES 457 & 458

COACH HORN COMPETITION - JUDGED EXHIBITION

There will be a Coach Horn competition held during the Coaching division. It is to be while the Coach is both moving and stationary. Tuesday evening (class 457) will be open to Amateurs only. Friday evening (class 458) will be open to all.

Trophy and Ribbons

CLASS 459 BEST PICNIC TURNOUT

Associated with the final judging of appointments in class 451.

Trophy and Ribbons

MISCELLANEOUS DRIVING CLASSES

US Equestrian Opportunity Classes except 464, 467, 470

Horses are exempt from the Federation Fees, including US Equestrian/USHJA Membership fees and the Equine Drugs and Medication fee. However, under US Equestrian Rules, horses entered only in these classes are still subject to and must comply with the Drugs and Medication rules and are subject to drug testing.

Trophy and Six Ribbons in all classes

Entry Fee \$20 per class.

CLASS 462

HORSE PAIRS PLEASURE TURNOUT

Open to pairs of horses driven to a four-wheeled traditional vehicle. To be judged: 40% on performance, manners, way of going; 30% on the condition, fit and appropriateness of the harness and vehicle; 15% on overall impression; 15% on neatness of attire.

CLASS 463

SCURRY DRIVING FOR PAIRS - NO COMPETITION VEHICLES

Open to pairs of horses driven to a four-wheeled traditional vehicle. Wire wheels prohibited. To be driven against the clock through obstacles (cones with balls). 10 seconds to be added for each ball knocked off. Fastest time to determine winner. Cantering or galloping permitted. 20" clearance on wheel track on ground.



Tara Miliziano Crowley, 2023 Single Horse Driving Champion.

Photo: Kind Media LLC

CLASS 464

HORSE PAIRS CHAMPIONSHIP

To be awarded to the two entries having the greatest number of points in classes 503 (Pleasure Drive), 462 and 463. Points to be awarded for all ribbons 7-5-3-2-1. In case of a tie, the award will be presented to the entry placing highest in class 462. Change of whip is permitted within the Horse Pairs section for the entry to be considered for the championship.

Champion Ribbon; Reserve Champion Ribbon

CLASS 465

SINGLE/PAIR PONY PLEASURE TURNOUT

Open to ponies driven to a two or four-wheeled traditional vehicle. To be judged: 40% on performance, manners, way of going; 30% on the condition, fit and appropriateness of the harness and vehicle; 15% on overall impression; 15% on neatness of attire.

CLASS 466

SINGLE/PAIR PONY SCURRY DRIVING

Open to ponies driven to a two or four-wheeled traditional vehicle. Wire wheels prohibited. To be driven against the clock through obstacles (cones with balls). 10 seconds to be added for each ball knocked off. Fastest time to determine winner. Cantering or galloping permitted. 20" clearance on wheel track on ground.

CLASS 467

SINGLE/PAIR PONY DRIVING CHAMPIONSHIP

To be awarded to the two entries having the greatest number of points in classes 505, 506 and 507 (Pleasure Drive), 465 and 466. Points will be awarded for all ribbons won 7-5-3-2-1. In case of a tie, the award will be presented to the entry placing highest in class 465. Change of whip is permitted within this section for the entry to be considered for the championship.

Trophy and Champion Ribbon; Reserve Champion Ribbon

CLASS 468

SINGLE HORSE PLEASURE DRIVING TURNOUT

Open to horses driven to a two or four-wheeled traditional vehicle. To be judged: 40% on performance, manners, way of going; 30% on the condition, fit and appropriateness of the harness and vehicle; 15% on overall impression; 15% on neatness of attire.

CLASS 469

SINGLE HORSE SCURRY

Open to horses driven to a two or four-wheeled traditional vehicle. Wire wheels prohibited. To be driven against the clock through obstacles (cones with balls). 10 seconds to be added for each ball knocked off. Fastest time to determine winner. Cantering or galloping permitted. 20" clearance on wheel track on ground.

CLASS 470

SINGLE HORSE CHAMPIONSHIP

To be awarded to the two entries having the greatest number of points in classes 501 and 502 (Pleasure Drive), 468 and 469. Points will be awarded for all ribbons won 7-5-3-2-1. In case of a tie, the award will be presented to the entry placing highest in class 468. Change of whip is permitted within this section for the entry to be considered for the championship.

Trophy and Champion Ribbon; Reserve Champion Ribbon

SADDLE SEAT EQUITATION

CLASS 372 USEF SADDLE SEAT MEDAL (17 and Under)

Entry Fee \$30

CLASS 379 SADDLE SEAT EQUITATION

For Jr. riders who have not reached their 18th birthday. Tests 1 - 16.

Entry Fee \$30

CLASS 380 SADDLE SEAT EQUITATION CHAMPIONSHIP

To be eligible, riders must have been entered, shown and judged in Class #379.

Entry Fee \$30

Trophy and 8 ribbons

CARRIAGE PLEASURE DRIVE

Use Carriage Drive entry blank. No post-entries.

US Equestrian Opportunity Class status except 509 & 511

Horses are exempt from the Federation fee, including the Equine Drugs and Medication fee. However, under US Equestrian rule GR821.3, horses entered only in these classes are still subject to and must comply with the Drugs and Medication rules and are subject to drug testing.

Entry Fee \$25

TO BE HELD AT 12:00 NOON, SUNDAY, MAY 26, 2024

Open to horses or ponies, driven in Single Harness (separate two- and four-wheel vehicle sections), Double Harness (pairs or tandems), Unicorn or Four-in-Hand. Fours, Unicorns, Pairs or Tandems need not be the property of one owner. To be shown to suitable vehicles (show wagons and commercial vehicles are excluded. See Special Division).

The listing of classes below will follow the same sequence in the Sunday schedule:

HORSE DIVISION

Class 501– Single Harness, Two Wheel Vehicles

Class 502– Single Harness, Four Wheel Vehicles

Class 503– Double Harness - Pairs - Tandems

Class 504– Unicorns and Four-in-Hands

PONY DIVISION

Class 505– Single Harness, Two Wheel Vehicles

Class 506– Single Harness, Four Wheel Vehicles

Class 507– Double Harness - Pairs - Tandems

Class 509– Light Commercial and Farmer's Division to compete as one group (Exhibition) - open to horses and ponies. Not eligible for Championship Drive-off.

NO POST-ENTRIES WILL BE ACCEPTED.

CLASS 510

CHAMPIONSHIP DRIVE OFF

To be awarded to the exhibitor in classes 501-508 (Horses and Ponies) who, in the opinion of the judges, has the best turn out. First place winners are invited to show back, and second place winners may show back if they wish.

Championship Trophy and Ribbon

CLASS 511

PLEASURE DRIVE AMATEUR WHIP AWARD

To be awarded to the Amateur Whip who most exemplifies the traditions of carriage driving at the highest level.

TIME SCHEDULE: Preliminary/Initial judging will take place at St. David's Church at noon. Class groups will be sent out onto the road for their return to the Devon showground. Final judging in the Dixon Oval will take place at approximately 1:00 pm.

JUDGING: Judges will inspect the turnouts in a line-up by section at starting point and will be immediately started for the drive by the starter. Entries will be observed along the road. Upon return to the Devon Showgrounds, each section will be judged in the Dixon Oval. Condition of the horses and ponies, soundness of wind and limb, and complete turnout will be taken into consideration by the judges. The route of the drive will be about 4 1/2 miles for all divisions. Maximum time allowed on the road is 40 minutes. There will be no bonus points for completing the course in less time. Excessive speed is not required. Racing, obstructing another vehicle or exceeding the time allowed will entail disqualification.

RULES: Dress should be appropriate for driving, but not "period costume." No person under 18 years of age will be permitted to drive, unless accompanied by an adult.

AWARDS: The final selection for the best turnout and presentation of awards will take place at the Devon Horse Show grounds in the Dixon Oval. Each exhibitor will be awarded a bronze plaque. Six ribbons will be awarded in each section.



*Dede Bushneck & Tri-Ef Hercules
2023 Single/Pair Pony Champion
Photo: Kind Media LLC*

Index

1.10/1.15M Amateur Jumper	53
1.40/1.45M Amateur Jumper	51
1.10/1.15M Junior Jumper	52
1.40/1.45M Junior Jumper	50
Amateur Owner Hunter.....	44, 45
American Saddlebred.....	62
Arena Eventing	15
Best Child Rider.....	34, 37
Biosecurity Form	29
Carriage Pleasure Drive	74
Coaching	70
Credit Card Authorization Form	31
Devon Club Hospitality	4
Directions	17
Driving Division, Misc.	72
Electronic Entry Submissions	11
Entry Blanks.....	online entries
English Pleasure Driving	67
Equitation	40
Family Class.....	39
Feed/Bedding Order Form	30
Fine Harness.....	67
Five-Gaited Section	63
Green Conformation Hunter	41
Green Hunter 3'6".....	42
Green Hunter 3'9".....	41
Hackney Horse.....	67
Hackney Pony	68
Hackney/Harness Pony	68
Hackney/Harness Pony Pleasure.....	68
High Performance Conformation Hunter...	41
High Performance Working Hunter	42
Hunt Teams	39
Hunter Breeding.....	58
Hunter Country Pleasure.....	64
Hunter Derby	45
Hotels, Equestrian Travel.....	81
Hotels	1-800-262-9974
Judges.....	19
Junior Hunter	35-37
Junior Jumper.....	50
Ladies Side Saddle.....	47
Large Pony Hunter.....	34
Lead Line	39

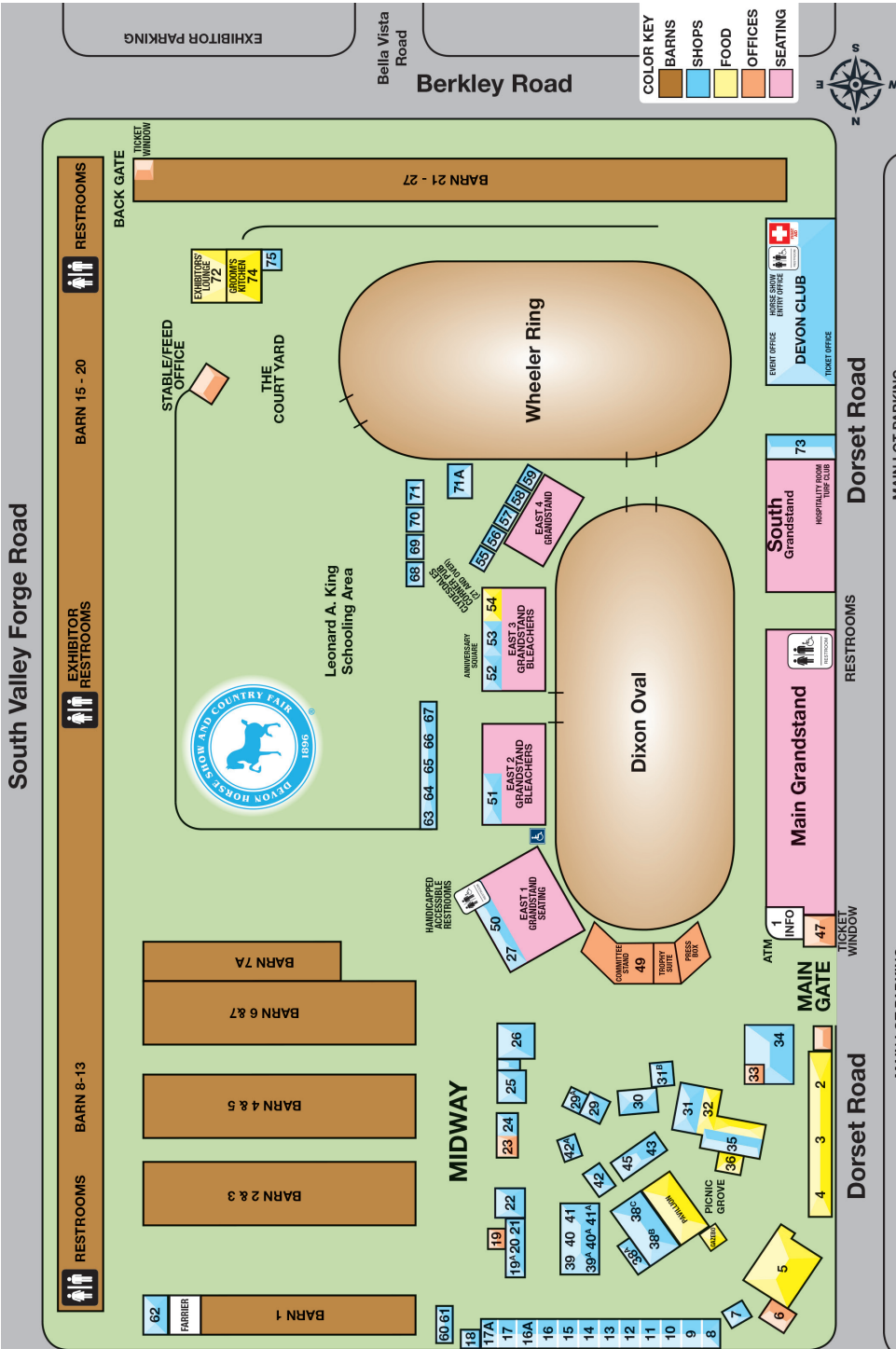
Local Hunter	46
Mailing/Shipping Address	16
Medium Pony Hunter.....	33
NAL	80
Officials.....	19
Open Fine Harness	67
Open Jumper	54
Parent & Child	39
Park Horse.....	66
Pennsylvania Bred Hunter Breeding.....	59
Photographers, Official	20
Pony Hunter Breeding.....	60, 61
Prize Money Distribution:	
Hunter.....	34
Jumper	53
Saddlebred, Hackney, Roadster	62
Qualifying Divisions	10
Qualifying Procedures	10
Roadster Horse.....	69
Roadster Pony	69
Rules & Regulations	11-14
Saddle Seat Equitation	74
Seating & Tickets.....	5
Show Jumping Hall of Fame.....	49
Show Pleasure Horse	64
Small Pony Hunter.....	33
Stabling Information	18
Three-Gaited	65
Time Schedule.....	21-28
US Equestrian Entry Agreement.....	17
US Equestrian Membership Page	56
US Equestrian Motorized Vehicle Policy...	48
US Equestrian Membership Statement	48
US Equestrian Safe Sport Statement.....	48
Young Hunter Under Saddle	60
Young Jumpers.....	57



Printing by Prestige Color
19 Prestige Lane, Lancaster, PA 17603
(717) 392-1711

South Valley Forge Road

West to Paoli / Lancaster → Lancaster Ave (Rt. 30) ← East to Bryn Mawr / Philadelphia





Ashlee Bond and Donatello, 2023 Sapphire Grand Prix winners. Photo: Kind Media LLC ©



Misdee Wrigley Miller; 2023 Coaching Champion. Photo: Kind Media LLC



Meridian Bank is
proud to support the
Devon Horse Show &
Country Fair!



MeridianBank®

MeridianBanker.com 866.327.9199

Loans | SBA | Wealth | Mortgage | Leasing



This show offers one or more classes that are recognized by the

NORTH AMERICAN LEAGUE



For riders to receive credit, they must be a current member.

Membership is valid for the qualifying year and entitles the rider to earn points on one or more horses shown in accredited classes.

National Finals are held at the Capital Challenge horse show

West Coast Finals are held at the International Jumper Festival.

Please complete and mail the application with payment to:

North American League

1298 Royal Rd.

Annville, PA 17003

Phone: 717-867-5643; Fax: 717-867-2174

www.ryegate.com

nal@ryegate.com

Join Online at: www.ryegate.com

Please enroll me as a member of the North American League:

Date: _____ ☐ Amateur ☐ Junior Qualifying Year: _____

Membership is effective the date received
in the league office with payment.

(September 1, XXXX – August 31, XXXX)

Member Information

Name: _____

Address: _____

City: _____ State: _____ Zip Code: _____

Phone: _____ Fax: _____

Email: _____ DOB: _____

☐ Payment of \$45.00 enclosed USEF: _____

Cardholder Information

Please Charge My: ☐ Master Card ☐ Visa ☐ Discover ☐ AmEx

Name (As Shown On Card): _____

Address: _____

City: _____ State: _____ Zip Code: _____

Card Number: _____ - _____ - _____ - _____

Expiration Date: ____ / ____ CVV: _____

I authorize Ryegate Show Services on the behalf of the NAL to charge my card.

Signature: _____



Equestrian Travel

Host Hotels

For reservations:
Contact hotels directly
or visit

www.devonhorseshow.net

and
click on hotels.

Information below includes the hotel's distance from the **Devon Horse Show & Country Fair** and rates:

Homewood Suites by Hilton Philadelphia - Great Valley
\$149 (One King - One bedroom Suite w/ Sleeper Sofa)
\$159 (Two Doubles - One bedroom Suite w/ Sleeper Sofa)
6.4 miles away from venue - Phone: 610-296-3500

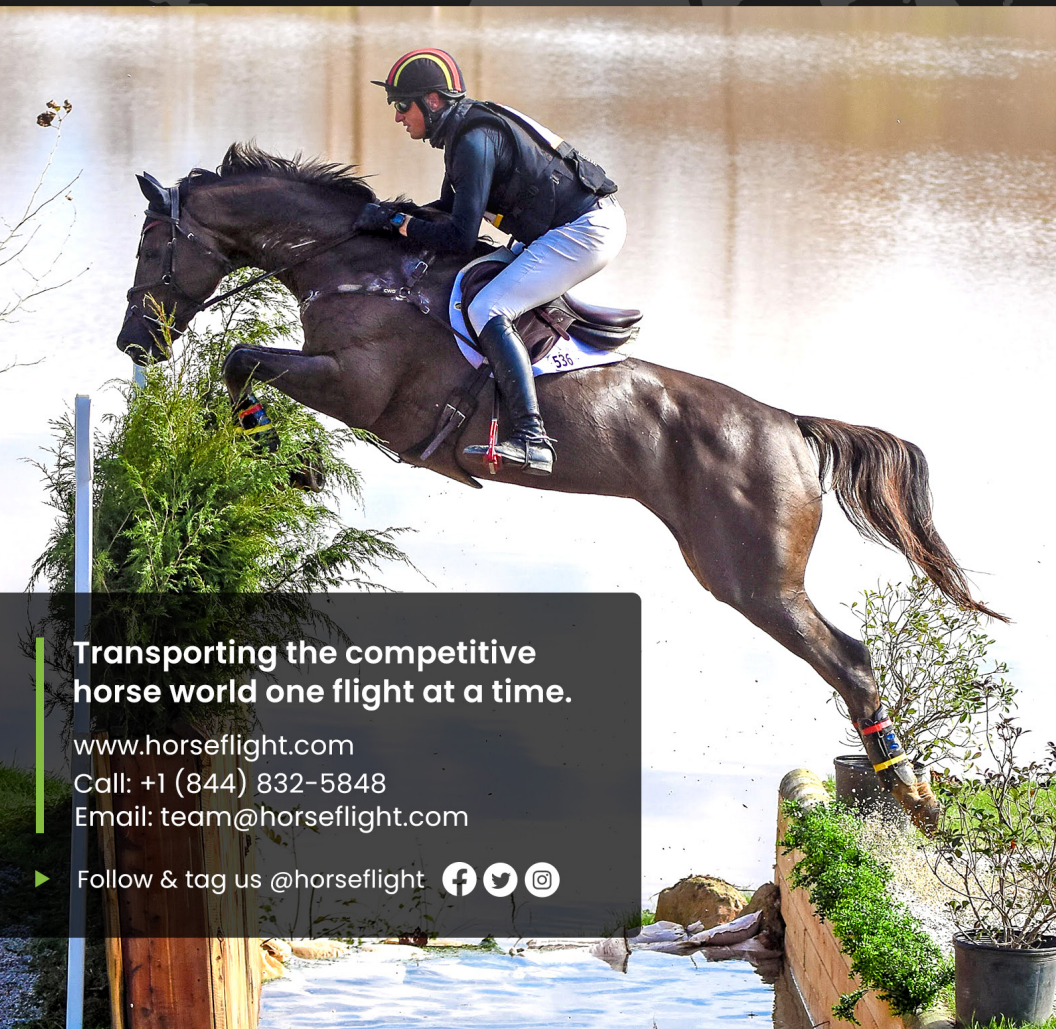
- Complimentary Breakfast
- Complimentary Wi-Fi
- Complimentary Parking
- Complimentary Fitness Center Access
- Pet Friendly - \$50 pet fee (see hotel for restrictions)

The Alloy King of Prussia - a Doubletree Hotel by Hilton
\$159 King Standard
\$169 - King Junior Suite w/ Sleeper Sofa in living room
5.7 miles away from venue - Phone: 610-337-1200

- Complimentary Wi-Fi
- Complimentary Parking
- Complimentary Fitness Center Access
- Complimentary Business Center
- Pet Friendly - \$50 pet fee (see hotel for restrictions)



For 2024 reservations: Contact hotels directly or
visit devonhorseshow.net and click on hotels.



Transporting the competitive horse world one flight at a time.

www.horseflight.com

Call: +1 (844) 832-5848

Email: team@horseflight.com

► Follow & tag us @horseflight



EXPERIENCE

PASSION

SAFETY



YOUR NEXT ADVENTURE STARTS AT LAND ROVER MAIN LINE



ABOVE & BEYOND

325 East Lancaster Avenue, Wayne, Pennsylvania 19087
610 520 2000 • www.landrovermainline.com



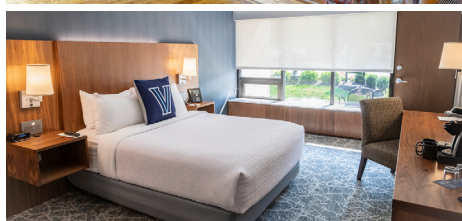
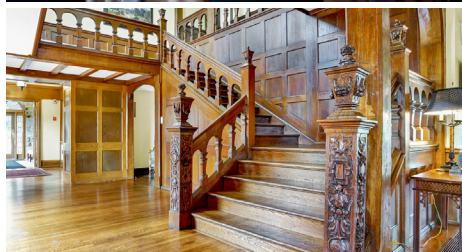
True leaders shape history. They dream bigger, push harder. They turn possibilities into reality, creating legacies that define a generation. Range Rover is a leader. The first luxury SUV of its kind, it helped transform the world of refined motoring. 50 years later, the New Range Rover builds on that incomparable achievement. With compelling design and greater levels of elegance, exclusivity and luxury, it leads by example.

YOUR LIFETIME OF EVENTS BEGIN HERE



THE INN AT VILLANOVA UNIVERSITY™

(610) 519-8000 | theinnatvillanova.com



Submit an Event Inquiry Today!
A Unique Venue for Meetings, Social Events &
Overnight Accommodations